

## Product datasheet for **TA387308M**

### LILRB2 Rabbit Polyclonal Antibody

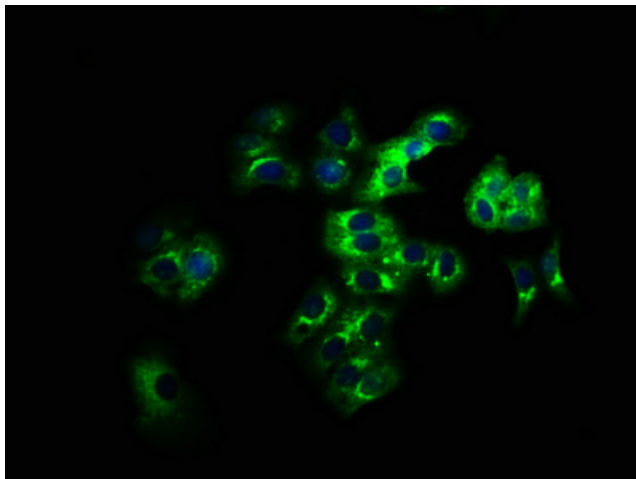
#### Product data:

|                       |   |
|-----------------------|---|
| Product Type:         | Primary Antibodies  |
| Applications:         | IF, WB  |
| Recommended Dilution: | Recommended dilution: WB:1:500-1:5000, IF:1:50-1:200  |
| Reactivity:           | Human   |
| Host:                 | Rabbit  |
| Isotype:              | IgG   |
| Clonality:            | Polyclonal  |
| Immunogen:            | Recombinant Human Leukocyte immunoglobulin-like receptor subfamily B member 2 protein (406-563AA)   |
| Formulation:          | Preservative: 0.03% Proclin 300<br>Constituents: 50% Glycerol, 0.01M PBS, pH 7.4  |
| Concentration:        | lot specific  |
| Purification:         | >95%, Protein G purified  |
| Conjugation:          | Unconjugated  |
| Storage:              | Upon receipt, store at -20°C or -80°C. Avoid repeated freeze.   |
| Stability:            | 1 year from dispatch.   |
| Database Link:        | <a href="#">Q8N423</a>  |
| Background:           | Receptor for class I MHC antigens. Recognizes a broad spectrum of HLA-A, HLA-B, HLA-C and HLA-G alleles. Involved in the down-regulation of the immune response and the development of tolerance. Competes with CD8A for binding to class I MHC antigens. Inhibits FCGR1A-mediated phosphorylation of cellular proteins and mobilization of intracellular calcium ions. |

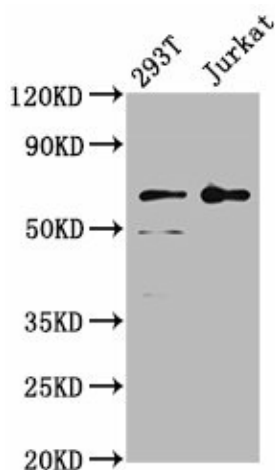


[View online »](#)

## Product images:



Immunofluorescence staining of HepG2 cells with [TA387308] at 1:166, counter-stained with DAPI. The cells were fixed in 4% formaldehyde, permeabilized using 0.2% Triton X-100 and blocked in 10% normal Goat Serum. The cells were then incubated with the antibody overnight at 4°C. The secondary antibody was Alexa Fluor 488-conjugated AffiniPure Goat Anti-Rabbit IgG(H+L).



Western Blot  
Positive WB detected in: 293T whole cell lysate, Jurkat whole cell lysate  
All lanes: LILRB2 antibody at 4µg/ml  
Secondary  
Goat polyclonal to rabbit IgG at 1/50000 dilution  
Predicted band size: 66, 65, 56, 52 kDa  
Observed band size: 66 kDa