

Product datasheet for **TA387307M**

OSR2 Rabbit Polyclonal Antibody

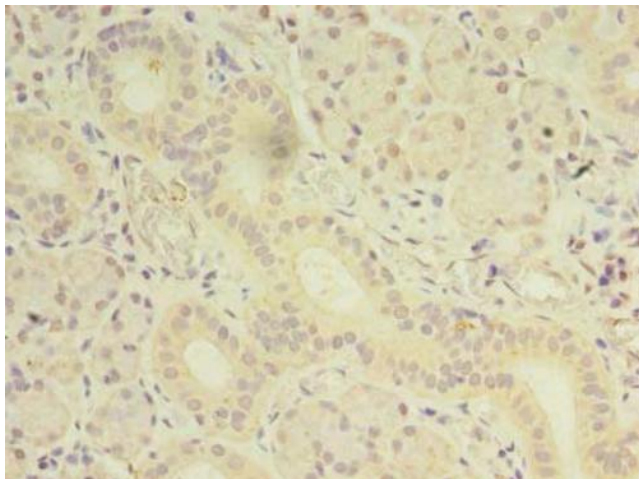
Product data:

Product Type:	Primary Antibodies
Applications:	IHC, WB
Recommended Dilution:	Recommended dilution: WB:1:500-1:2000, IHC:1:20-1:200
Reactivity:	Human
Host:	Rabbit
Isotype:	IgG
Clonality:	Polyclonal
Immunogen:	Recombinant Human Protein odd-skipped-related 2 protein (101-276AA)
Formulation:	Preservative: 0.03% Proclin 300 Constituents: 50% Glycerol, 0.01M PBS, PH 7.4
Concentration:	lot specific
Purification:	>95%, Protein G purified
Conjugation:	Unconjugated
Storage:	Upon receipt, store at -20°C or -80°C. Avoid repeated freeze.
Stability:	1 year from dispatch.
Database Link:	Q8N2R0
Background:	nucleus, sequence-specific DNA binding, bone morphogenesis, cell differentiation, chondrocyte differentiation, embryo development, embryonic digit morphogenesis, embryonic forelimb morphogenesis, embryonic hindlimb morphogenesis, embryonic skeletal joint development

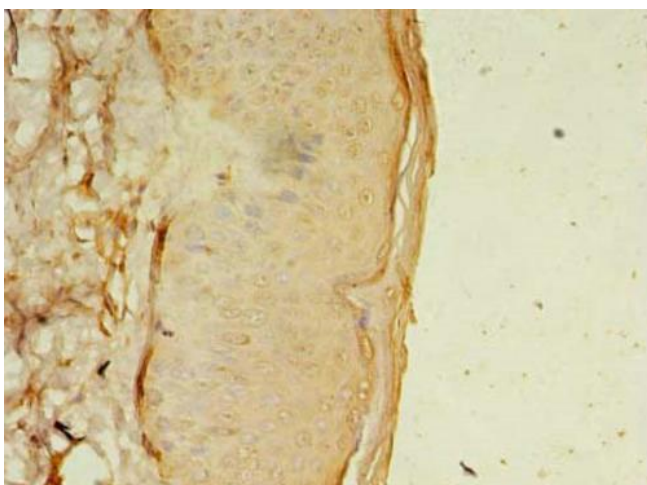


[View online »](#)

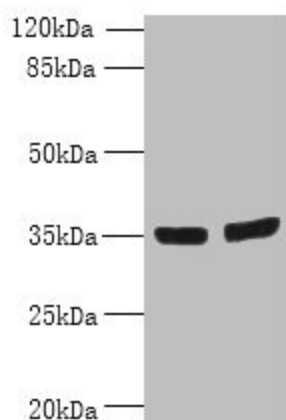
Product images:



Immunohistochemistry of paraffin-embedded human pancreatic tissue using [TA387307] at dilution of 1:100



Immunohistochemistry of paraffin-embedded human skin tissue using [TA387307] at dilution of 1:100



Western blot

All lanes: OSR2 antibody at 7 μ g/ml

Lane 1: Jurkat whole cell lysate

Lane 2: Hela whole cell lysate

Secondary

Goat polyclonal to rabbit IgG at 1/10000 dilution

Predicted band size: 36, 31, 49 kDa

Observed band size: 36 kDa