

Product datasheet for **TA387306M**

RBFA Rabbit Polyclonal Antibody

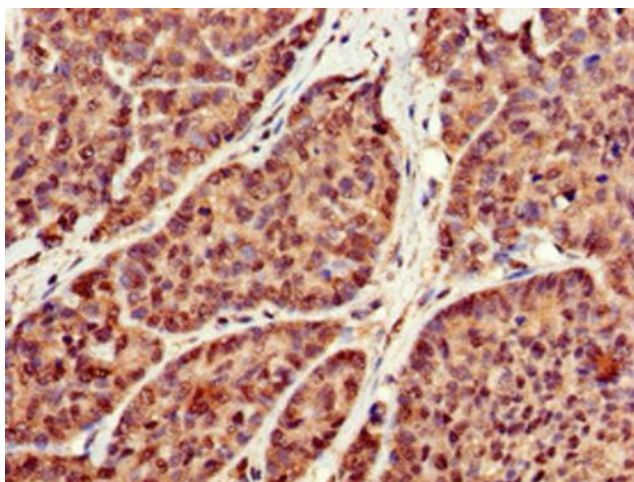
Product data:

Product Type:	Primary Antibodies
Applications:	IHC, WB
Recommended Dilution:	Recommended dilution: WB:1:500-1:5000, IHC:1:20-1:200
Reactivity:	Mouse, Rat, Human
Host:	Rabbit
Isotype:	IgG
Clonality:	Polyclonal
Immunogen:	Recombinant Human Putative ribosome-binding factor A, mitochondrial protein (201-343AA)
Formulation:	Preservative: 0.03% Proclin 300 Constituents: 50% Glycerol, 0.01M PBS, pH 7.4
Concentration:	lot specific
Purification:	>95%, Protein G purified
Conjugation:	Unconjugated
Storage:	Upon receipt, store at -20°C or -80°C. Avoid repeated freeze.
Stability:	1 year from dispatch.
Database Link:	Q8N0V3

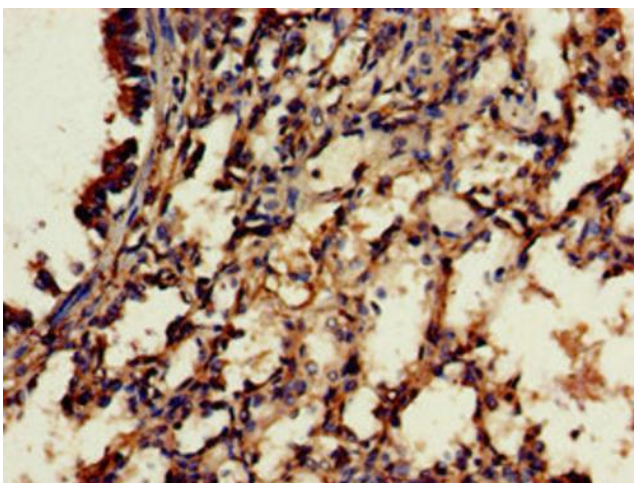


[View online »](#)

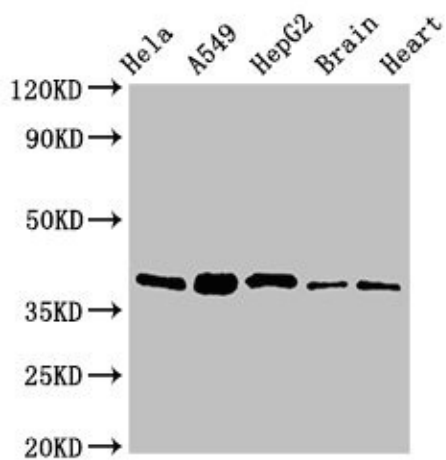
Product images:



Immunohistochemistry of paraffin-embedded human ovarian cancer using [TA387306] at dilution of 1:100



Immunohistochemistry of paraffin-embedded human lung tissue using [TA387306] at dilution of 1:100



Western Blot

Positive WB detected in: HeLa whole cell lysate,
A549 whole cell lysate, HepG2 whole cell lysate,
Mouse brain tissue, Rat heart tissue

All lanes: RBFA antibody at 2 μ g/ml

Secondary

Goat polyclonal to rabbit IgG at 1/50000 dilution

Predicted band size: 39, 28 kDa

Observed band size: 39 kDa