

## Product datasheet for **TA387298M**

### FRMD5 Rabbit Polyclonal Antibody

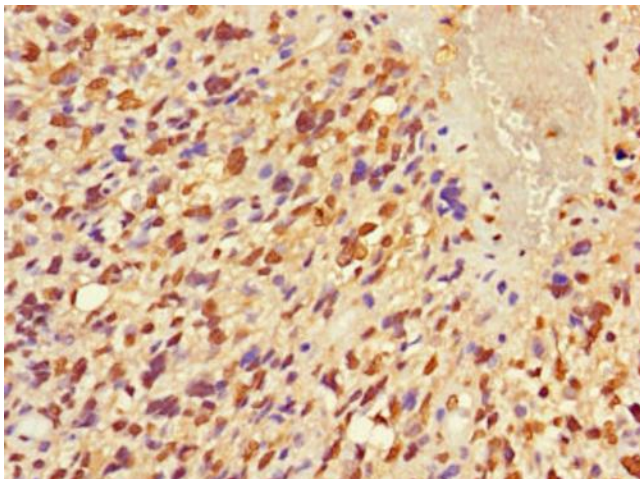
#### Product data:

Product Type:	Primary Antibodies
Applications:	IF, IHC, WB
Recommended Dilution:	Recommended dilution: WB:1:1000-1:5000, IHC:1:20-1:200, IF:1:50-1:200
Reactivity:	Mouse, Human
Host:	Rabbit
Isotype:	IgG
Clonality:	Polyclonal
Immunogen:	Recombinant Human FERM domain-containing protein 5 protein (295-504AA)
Formulation:	Preservative: 0.03% Proclin 300 Constituents: 50% Glycerol, 0.01M PBS, PH 7.4
Concentration:	lot specific
Purification:	>95%, Protein G purified
Conjugation:	Unconjugated
Storage:	Upon receipt, store at -20°C or -80°C. Avoid repeated freeze.
Stability:	1 year from dispatch.
Database Link:	<a href="#">Q7Z6J6</a>

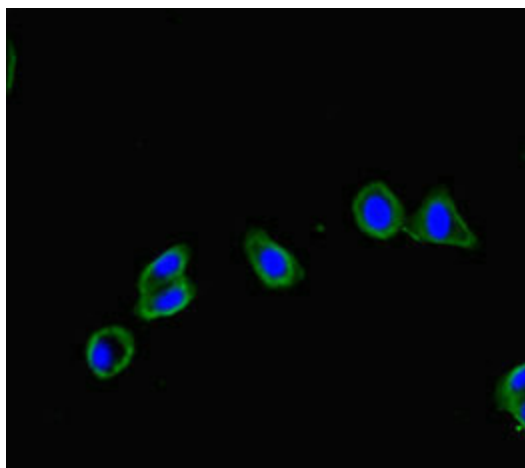


[View online »](#)

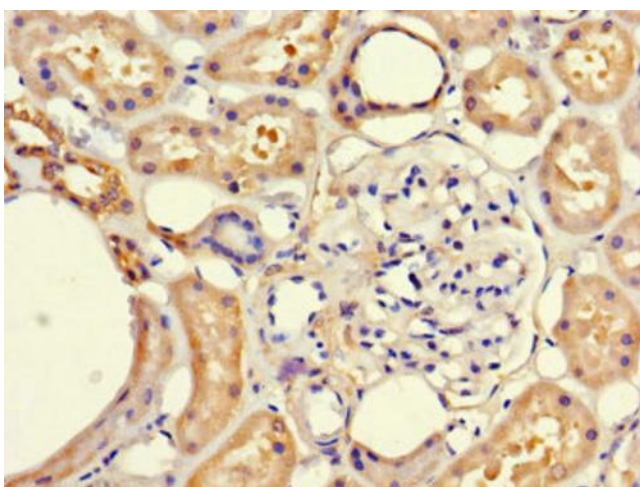
## Product images:



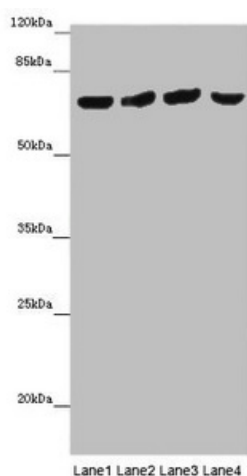
Immunohistochemistry of paraffin-embedded human glioma using [TA387298] at dilution of 1:100



Immunofluorescent analysis of HepG2 cells using [TA387298] at dilution of 1:100 and Alexa Fluor 488-conjugated AffiniPure Goat Anti-Rabbit IgG(H+L)



Immunohistochemistry of paraffin-embedded human kidney tissue using [TA387298] at dilution of 1:100



#### Western blot

All lanes: FRMD5 antibody at 16  $\mu$ g/ml

Lane 1: Mouse kidney tissue

Lane 2: Mouse heart tissue

Lane 3: Mouse skeletal muscle tissue

Lane 4: Mouse lung tissue

Secondary

Goat polyclonal to rabbit IgG at 1/10000 dilution

Predicted band size: 66, 64 kDa

Observed band size: 65 kDa