

## Product datasheet for **TA387296**

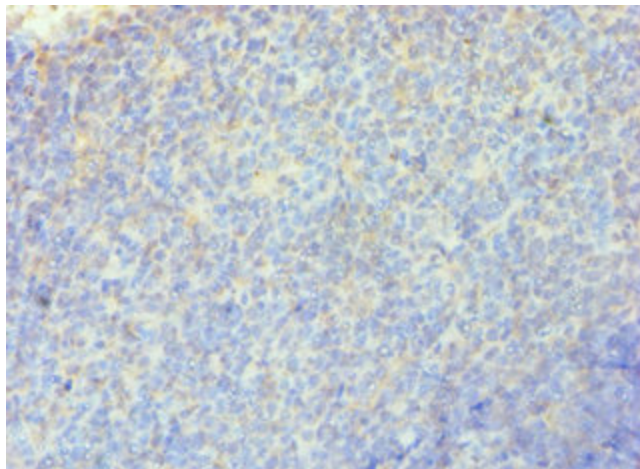
### RRM2B Rabbit Polyclonal Antibody

#### Product data:

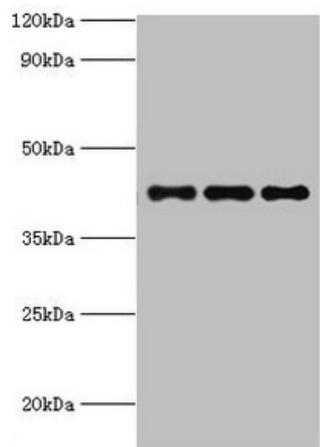
Product Type:	Primary Antibodies
Applications:	IHC, WB
Recommended Dilution:	Recommended dilution: WB:1:500-1:2000, IHC:1:20-1:200
Reactivity:	Human
Host:	Rabbit
Isotype:	IgG
Clonality:	Polyclonal
Immunogen:	Recombinant Human Ribonucleoside-diphosphate reductase subunit M2 B protein (1-351AA)
Formulation:	PBS with 0.02% sodium azide, 50% glycerol, pH7.3.
Concentration:	lot specific
Purification:	Antigen Affinity Purified
Conjugation:	Unconjugated
Storage:	Upon receipt, store at -20°C or -80°C. Avoid repeated freeze.
Stability:	1 year from dispatch.
Database Link:	<a href="#">Q7LG56</a>
Background:	Plays a pivotal role in cell survival by repairing damaged DNA in a p53/TP53-dependent manner. Supplies deoxyribonucleotides for DNA repair in cells arrested at G1 or G2. Contains an iron-tyrosyl free radical center required for catalysis. Forms an active ribonucleotide reductase (RNR) complex with RRM1 which is expressed both in resting and proliferating cells in response to DNA damage.



[View online »](#)

**Product images:**

Immunohistochemistry of paraffin-embedded human tonsil tissue using TA387296 at dilution of 1:100

**Western blot**

All lanes: RRM2B antibody at 3 $\mu$ g/ml

Lane 1: MCF-7 whole cell lysate

Lane 2: HeLa whole cell lysate

Lane 3: HepG2 whole cell lysate

Secondary

Goat polyclonal to rabbit IgG at 1/10000 dilution

Predicted band size: 41, 35, 16, 8, 5, 49 kDa

Observed band size: 41 kDa