

Product datasheet for **TA387295M**

RRM2B Rabbit Polyclonal Antibody

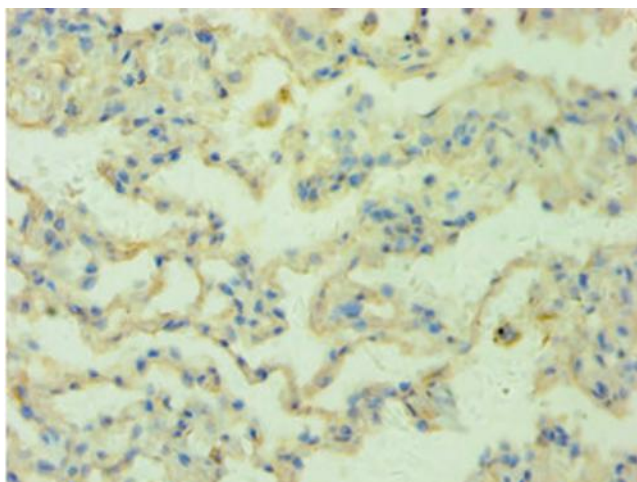
Product data:

Product Type:	Primary Antibodies
Applications:	IHC, IP, WB
Recommended Dilution:	Recommended dilution: WB:1:1000-1:5000, IHC:1:20-1:200, IP:1:200-1:2000
Reactivity:	Human
Host:	Rabbit
Isotype:	IgG
Clonality:	Polyclonal
Immunogen:	Recombinant Human Ribonucleoside-diphosphate reductase subunit M2 B protein (1-351AA)
Formulation:	PBS with 0.02% sodium azide, 50% glycerol, pH7.3.
Concentration:	lot specific
Purification:	Antigen Affinity Purified
Conjugation:	Unconjugated
Storage:	Upon receipt, store at -20°C or -80°C. Avoid repeated freeze.
Stability:	1 year from dispatch.
Database Link:	Q7LG56
Background:	Plays a pivotal role in cell survival by repairing damaged DNA in a p53/TP53-dependent manner. Supplies deoxyribonucleotides for DNA repair in cells arrested at G1 or G2. Contains an iron-tyrosyl free radical center required for catalysis. Forms an active ribonucleotide reductase (RNR) complex with RRM1 which is expressed both in resting and proliferating cells in response to DNA damage.

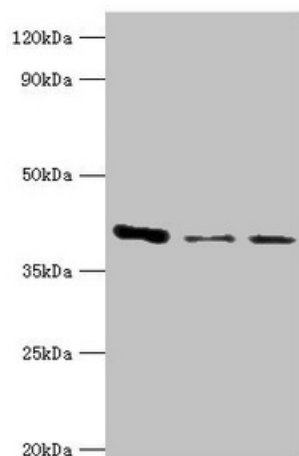


[View online »](#)

Product images:



Immunohistochemistry of paraffin-embedded human lung tissue using [TA387295] at dilution 1:100



Western blot
All lanes: E3 Ribonucleoside-diphosphate reductase subunit M2 B antibody at 6µg/ml
Lane 1: MCF-7 whole cell lysate
Lane 2: HeLa whole cell lysate
Lane 3: HepG2 whole cell lysate
Secondary
Goat polyclonal to rabbit IgG at 1/10000 dilution
Predicted band size: 41, 35, 16, 8, 5, 49 kDa
Observed band size: 41 kDa