

## Product datasheet for **TA387293**

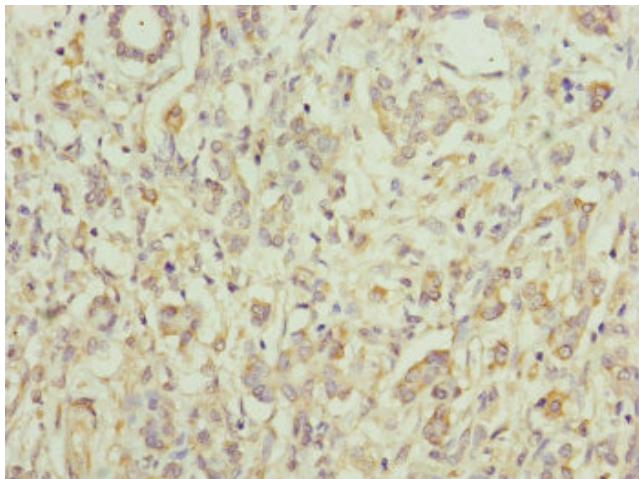
### EIF3M Rabbit Polyclonal Antibody

#### Product data:

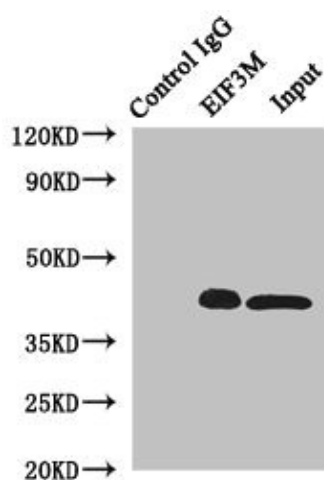
Product Type:	Primary Antibodies
Applications:	IHC, IP, WB
Recommended Dilution:	Recommended dilution: WB:1:1000-1:5000, IHC:1:20-1:200, IP:1:200-1:2000
Reactivity:	Mouse, Human
Host:	Rabbit
Isotype:	IgG
Clonality:	Polyclonal
Immunogen:	Recombinant Human Eukaryotic translation initiation factor 3 subunit M protein (1-374AA)
Formulation:	PBS with 0.02% sodium azide, 50% glycerol, pH7.3.
Concentration:	lot specific
Purification:	Antigen Affinity Purified
Conjugation:	Unconjugated
Storage:	Upon receipt, store at -20°C or -80°C. Avoid repeated freeze.
Stability:	1 year from dispatch.
Database Link:	<a href="#">Q7L2H7</a>
Background:	Component of the eukaryotic translation initiation factor 3 (eIF-3) complex, which is required for several steps in the initiation of protein synthesis. The eIF-3 complex associates with the 40S ribosome and facilitates the recruitment of eIF-1, eIF-1A, eIF-2:GTP:methionyl-tRNA <sup>i</sup> and eIF-5 to form the 43S preinitiation complex (43S PIC). The eIF-3 complex stimulates mRNA recruitment to the 43S PIC and scanning of the mRNA for AUG recognition. The eIF-3 complex is also required for disassembly and recycling of post-termination ribosomal complexes and subsequently prevents premature joining of the 40S and 60S ribosomal subunits prior to initiation. May favor virus entry in case of infection with herpes simplex virus 1 (HSV1) or herpes simplex virus 2 (HSV2).



[View online »](#)

**Product images:**

Immunohistochemistry of paraffin-embedded human pancreatic cancer using TA387293 at dilution of 1:100

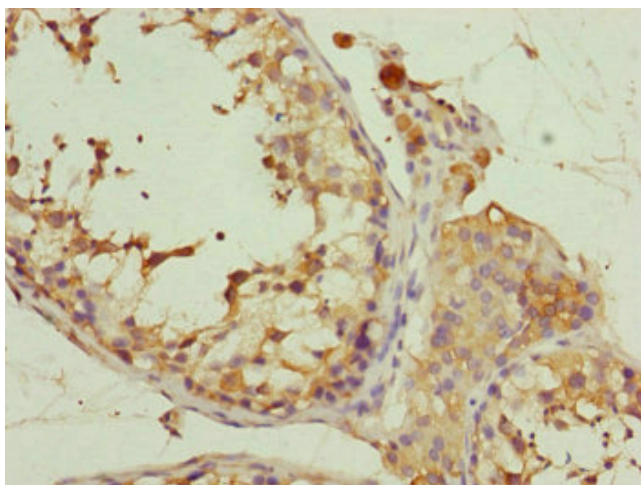


Immunoprecipitating EIF3M in HeLa whole cell lysate

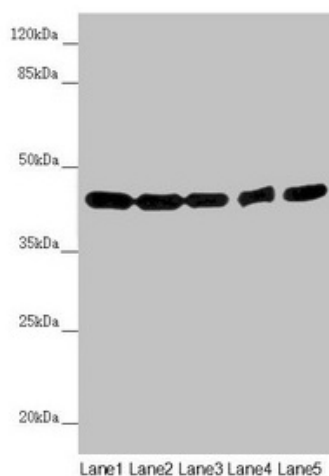
Lane 1: Rabbit control IgG instead of (1 $\mu$ g) instead of TA387293 in HeLa whole cell lysate. For western blotting, a HRP-conjugated light chain specific antibody was used as the Secondary antibody (1/50000)

Lane 2: TA387293 (4 $\mu$ g) + HeLa whole cell lysate (500 $\mu$ g)

Lane 3: HeLa whole cell lysate (20 $\mu$ g)



Immunohistochemistry of paraffin-embedded human testis tissue using TA387293 at dilution of 1:100



Western blot

All lanes: EIF3M antibody at 2.02 $\mu$ g/ml

Lane 1: HeLa whole cell lysate

Lane 2: A549 whole cell lysate

Lane 3: Mouse gonadal tissue

Lane 4: Human placenta tissue

Lane 5: Mouse brain tissue

Secondary

Goat polyclonal to rabbit IgG at 1/10000 dilution

Predicted band size: 43, 28 kDa

Observed band size: 43 kDa