

## Product datasheet for **TA387291M**

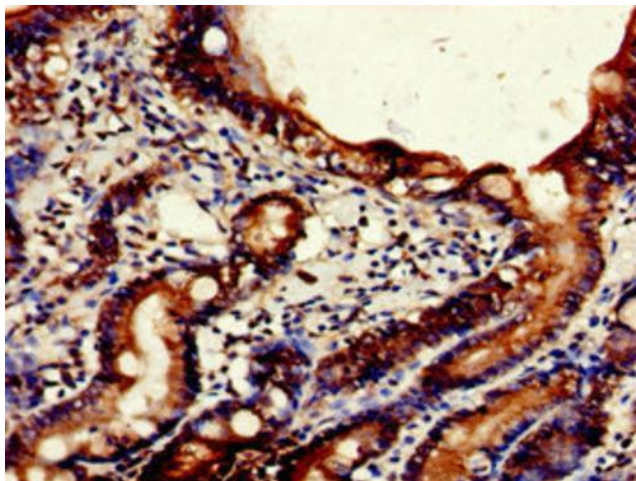
### **NPSR1 Rabbit Polyclonal Antibody**

#### **Product data:**

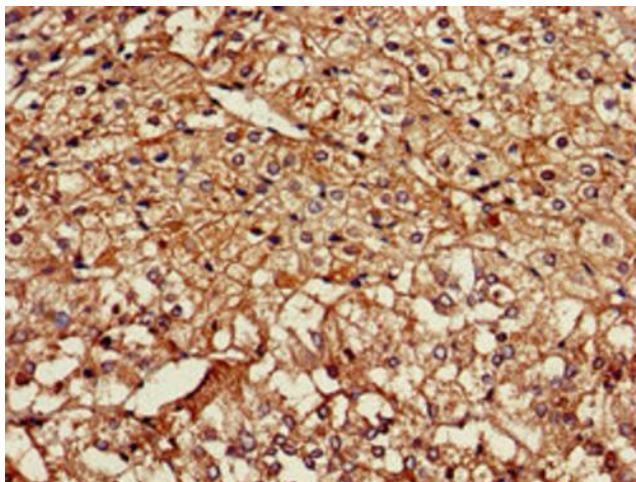
Product Type:	Primary Antibodies
Applications:	IHC, WB
Recommended Dilution:	Recommended dilution: WB:1:500-1:5000, IHC:1:20-1:200
Reactivity:	Mouse, Rat, Human
Host:	Rabbit
Isotype:	IgG
Clonality:	Polyclonal
Immunogen:	Recombinant Human Neuropeptide S receptor protein (1-52AA)
Formulation:	Preservative: 0.03% Proclin 300 Constituents: 50% Glycerol, 0.01M PBS, pH 7.4
Concentration:	lot specific
Purification:	>95%, Protein G purified
Conjugation:	Unconjugated
Storage:	Upon receipt, store at -20°C or -80°C. Avoid repeated freeze.
Stability:	1 year from dispatch.
Database Link:	<a href="#">Q6W5P4</a>
Background:	G-protein coupled receptor for neuropeptide S (NPS) (PubMed:16790440). Promotes mobilization of intracellular Ca(2+) stores (PubMed:16790440). Inhibits cell growth in response to NPS binding (PubMed:15947423). Involved in pathogenesis of asthma and other IgE-mediated diseases.



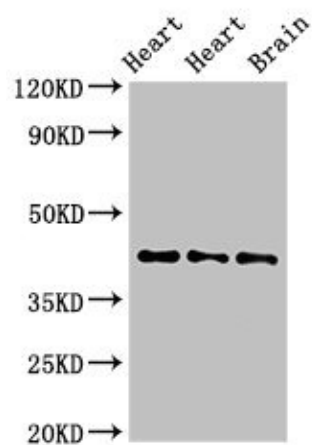
[View online »](#)

**Product images:**

Immunohistochemistry of paraffin-embedded human small intestine tissue using [TA387291] at dilution of 1:100



Immunohistochemistry of paraffin-embedded human adrenal gland tissue using [TA387291] at dilution of 1:100



## Western Blot

Positive WB detected in: Rat heart tissue, Mouse heart tissue, Mouse brain tissue

All lanes: NPSR1 antibody at 4µg/ml

Secondary

Goat polyclonal to rabbit IgG at 1/50000 dilution

Predicted band size: 43, 36, 45, 44, 42, 19, 16, 17, 11 kDa

Observed band size: 43 kDa