

## Product datasheet for **TA387289**

### **GTF2H2C Rabbit Polyclonal Antibody**

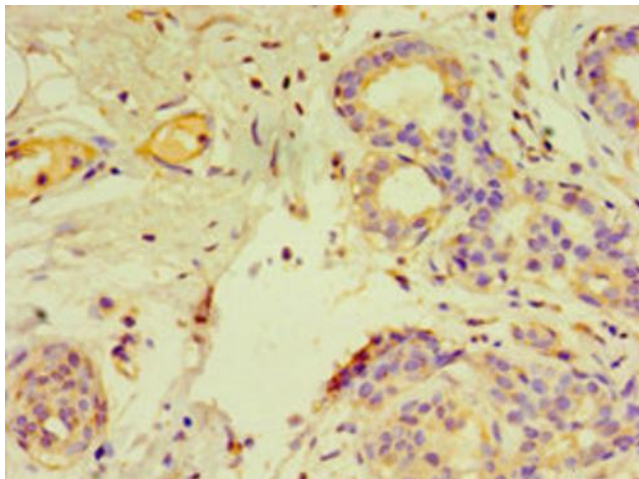
#### **Product data:**

Product Type:	Primary Antibodies
Applications:	IHC, WB
Recommended Dilution:	Recommended dilution: WB:1:200-1:1000, IHC:1:20-1:200
Reactivity:	Human
Host:	Rabbit
Isotype:	IgG
Clonality:	Polyclonal
Immunogen:	Recombinant Human General transcription factor IIH subunit 2-like protein (1-260AA)
Formulation:	PBS with 0.02% sodium azide, 50% glycerol, pH7.3.
Concentration:	lot specific
Purification:	Antigen Affinity Purified
Conjugation:	Unconjugated
Storage:	Upon receipt, store at -20°C or -80°C. Avoid repeated freeze.
Stability:	1 year from dispatch.
Database Link:	<a href="#">Q6P1K8</a>
Background:	Component of the core-TFIID basal transcription factor involved in nucleotide excision repair (NER) of DNA and, when complexed to CAK, in RNA transcription by RNA polymerase II.

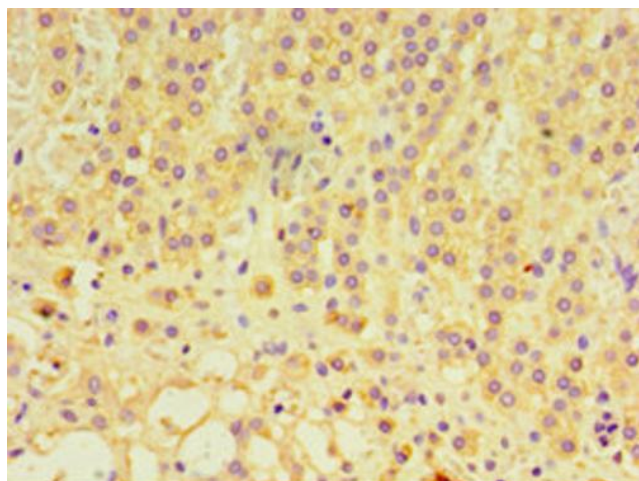


[View online »](#)

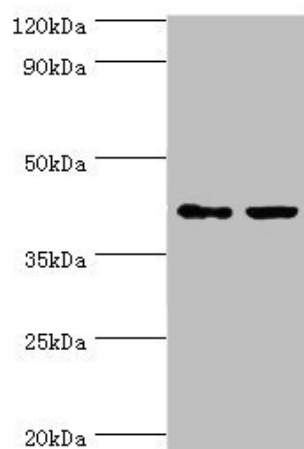
## Product images:



Immunohistochemistry of paraffin-embedded human breast cancer using TA387289 at dilution of 1:100



Immunohistochemistry of paraffin-embedded human adrenal gland tissue using TA387289 at dilution of 1:100



Western blot

All lanes: GTF2H2C antibody at 8 $\mu$ g/ml

Lane 1: HepG2 whole cell lysate

Lane 2: K562 whole cell lysate

Secondary

Goat polyclonal to rabbit IgG at 1/10000 dilution

Predicted band size: 44 kDa

Observed band size: 44 kDa