

Product datasheet for **TA387288M**

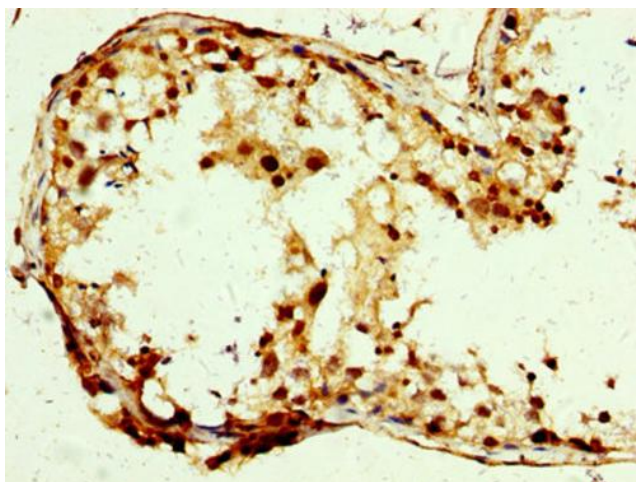
SLC25A24 Rabbit Polyclonal Antibody

Product data:

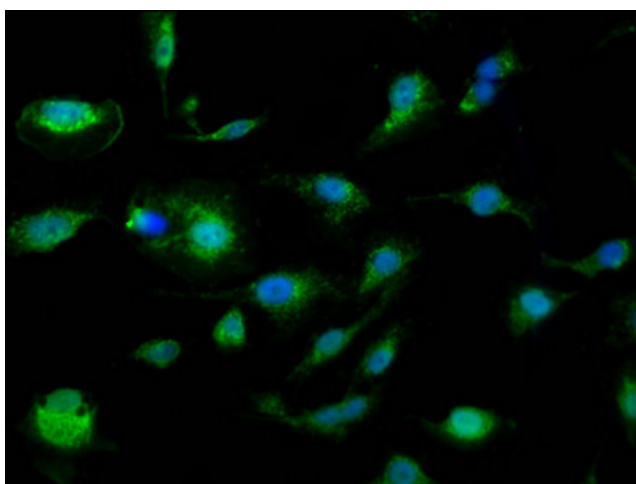
Product Type:	Primary Antibodies
Applications:	IF, IHC, WB
Recommended Dilution:	Recommended dilution: WB:1:500-1:5000, IHC:1:200-1:500, IF:1:50-1:200
Reactivity:	Rat, Mouse, Human
Host:	Rabbit
Isotype:	IgG
Clonality:	Polyclonal
Immunogen:	Recombinant Human Calcium-binding mitochondrial carrier protein SCaMC-1 protein (1-197AA)
Formulation:	Preservative: 0.03% Proclin 300 Constituents: 50% Glycerol, 0.01M PBS, pH 7.4
Concentration:	lot specific
Purification:	>95%, Protein G purified
Conjugation:	Unconjugated
Storage:	Upon receipt, store at -20°C or -80°C. Avoid repeated freeze.
Stability:	1 year from dispatch.
Database Link:	Q6NUK1
Background:	Calcium-dependent mitochondrial solute carrier. Mediates the reversible, electroneutral exchange of Mg-ATP or Mg-ADP against phosphate ions, catalyzing the net uptake or efflux of adenine nucleotides across the mitochondrial inner membrane. Nucleotide transport is inactive when cytosolic calcium levels are low, and is activated by an increase in cytosolic calcium levels. May play a role in protecting cells against oxidative stress-induced cell death, probably by promoting the formation of calcium-phosphate precipitates in the mitochondrial matrix, and thereby buffering calcium levels in the mitochondrial matrix.



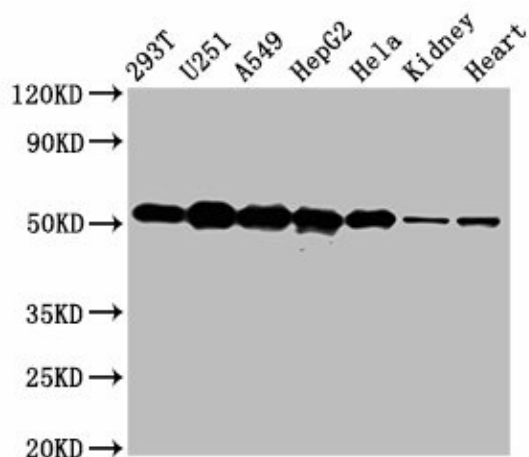
[View online »](#)

Product images:

IHC image of [TA387288] diluted at 1:250 and staining in paraffin-embedded human testis tissue performed on a Leica Bond™ system. After dewaxing and hydration, antigen retrieval was mediated by high pressure in a citrate buffer (pH 6.0). Section was blocked with 10% normal goat serum 30min at RT. Then primary antibody (1% BSA) was incubated at 4°C overnight. The primary is detected by a biotinylated secondary antibody and visualized using an HRP conjugated SP system.



Immunofluorescence staining of U251 cells with [TA387288] at 1:110, counter-stained with DAPI. The cells were fixed in 4% formaldehyde, permeabilized using 0.2% Triton X-100 and blocked in 10% normal Goat Serum. The cells were then incubated with the antibody overnight at 4°C. The secondary antibody was Alexa Fluor 488-conjugated AffiniPure Goat Anti-Rabbit IgG(H+L).



Western Blot

Positive WB detected in: 293T whole cell lysate, U251 whole cell lysate, A549 whole cell lysate, HepG2 whole cell lysate, HeLa whole cell lysate, Rat kidney tissue, Mouse heart tissue

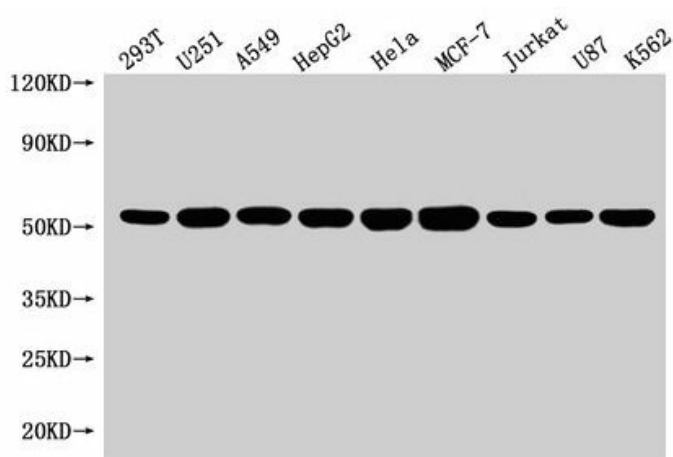
All lanes: SLC25A24 antibody at 5µg/ml

Secondary

Goat polyclonal to rabbit IgG at 1/50000 dilution

Predicted band size: 54, 52 kDa

Observed band size: 54 kDa



Western Blot

Positive WB detected in: 293T whole cell lysate, U251 whole cell lysate, A549 whole cell lysate, HepG2 whole cell lysate, HeLa whole cell lysate, MCF-7 whole cell lysate, Jurkat whole cell lysate, U87 whole cell lysate, K562 whole cell lysate

All lanes: SLC25A24 antibody at 1:1500

Secondary

Goat polyclonal to rabbit IgG at 1/50000 dilution

Predicted band size: 54, 52 kDa

Observed band size: 54 kDa