

## Product datasheet for **TA387284M**

### CATSPERE Rabbit Polyclonal Antibody

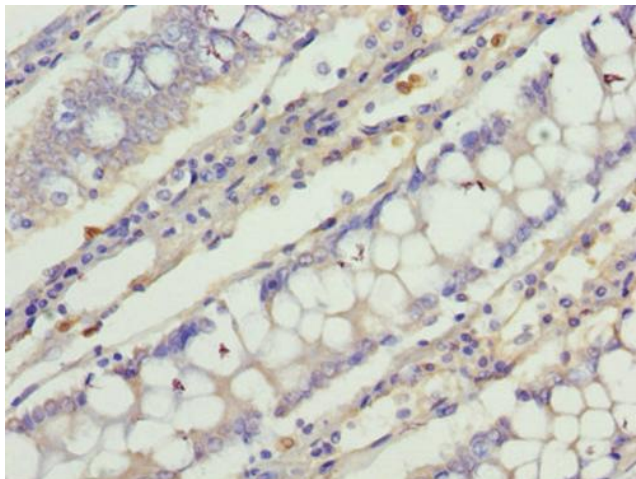
#### Product data:

Product Type:	Primary Antibodies
Applications:	IF, IHC, WB
Recommended Dilution:	Recommended dilution: WB:1:500-1:5000, IHC:1:20-1:200, IF:1:50-1:200
Reactivity:	Mouse, Human
Host:	Rabbit
Isotype:	IgG
Clonality:	Polyclonal
Immunogen:	Recombinant Human Cation channel sperm-associated protein subunit epsilon protein (601-832AA)
Formulation:	Preservative: 0.03% Proclin 300 Constituents: 50% Glycerol, 0.01M PBS, PH 7.4
Concentration:	lot specific
Purification:	>95%, Protein G purified
Conjugation:	Unconjugated
Storage:	Upon receipt, store at -20°C or -80°C. Avoid repeated freeze.
Stability:	1 year from dispatch.
Database Link:	<a href="#">Q5SY80</a>
Background:	Auxiliary component of the CatSper complex, a complex involved in sperm cell hyperactivation. Sperm cell hyperactivation is needed for sperm motility which is essential late in the preparation of sperm for fertilization.

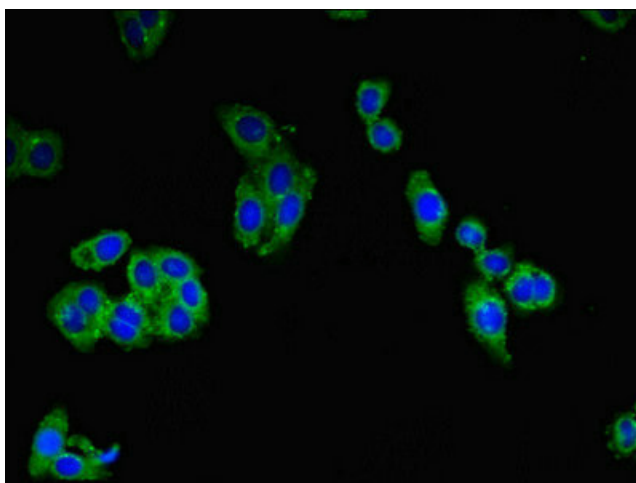


[View online »](#)

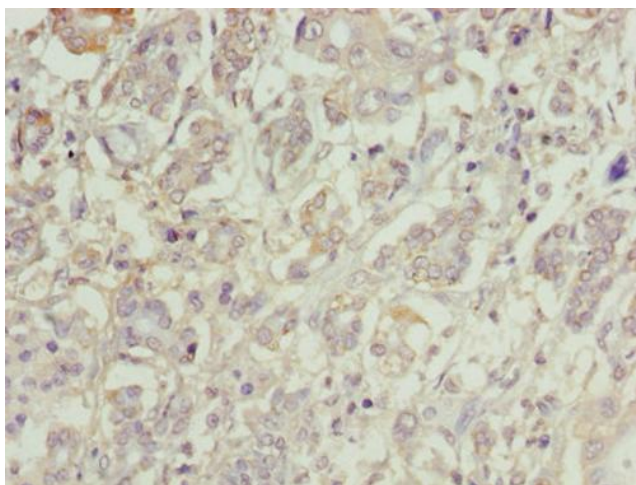
## Product images:



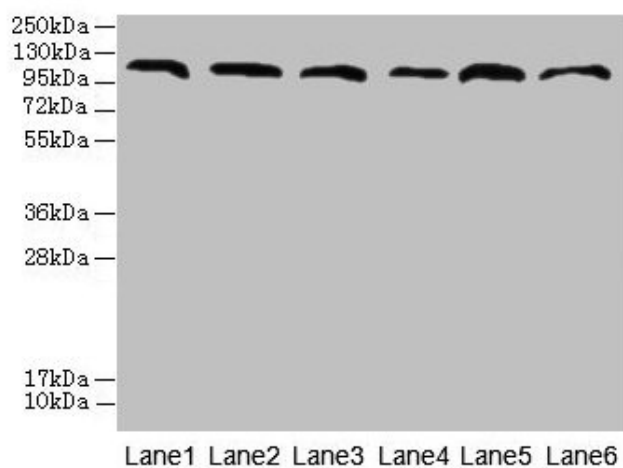
Immunohistochemistry of paraffin-embedded human colon cancer using [TA387284] at dilution of 1:100



Immunofluorescent analysis of HepG2 cells using [TA387284] at dilution of 1:100 and Alexa Fluor 488-conjugated AffiniPure Goat Anti-Rabbit IgG(H+L)



Immunohistochemistry of paraffin-embedded human pancreatic cancer using [TA387284] at dilution of 1:100



Western blot

All lanes: CATSPERE antibody at 6 $\mu$ g/ml

Lane 1: U87 whole cell lysate

Lane 2: HepG2 whole cell lysate

Lane 3: A549 whole cell lysate

Lane 4: Mouse lung tissue

Lane 5: Mouse liver tissue

Lane 6: PC-3 whole cell lysate

Secondary

Goat polyclonal to rabbit IgG at 1/10000 dilution

Predicted band size: 110, 96, 93 kDa

Observed band size: 110 kDa