

Product datasheet for **TA387283M**

TTC38 Rabbit Polyclonal Antibody

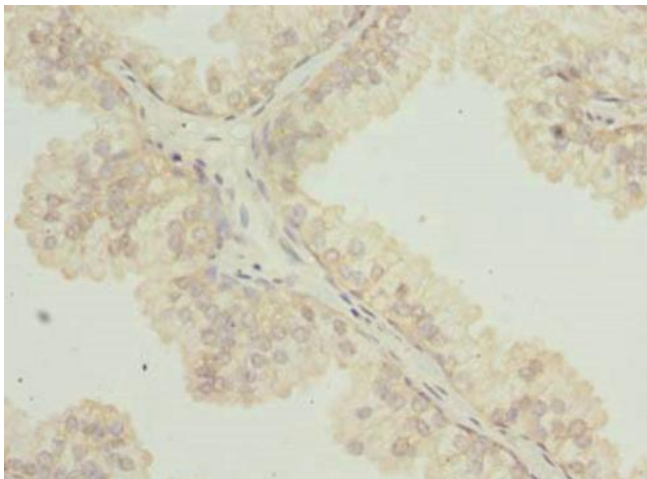
Product data:

Product Type:	Primary Antibodies
Applications:	IHC, WB
Recommended Dilution:	Recommended dilution: WB:1:500-1:2000, IHC:1:20-1:200
Reactivity:	Mouse, Human
Host:	Rabbit
Isotype:	IgG
Clonality:	Polyclonal
Immunogen:	Recombinant Human Tetratricopeptide repeat protein 38 protein (2-200AA)
Formulation:	Preservative: 0.03% Proclin 300 Constituents: 50% Glycerol, 0.01M PBS, PH 7.4
Concentration:	lot specific
Purification:	Antigen Affinity Purified
Conjugation:	Unconjugated
Storage:	Upon receipt, store at -20°C or -80°C. Avoid repeated freeze.
Stability:	1 year from dispatch.
Database Link:	Q5R3I4

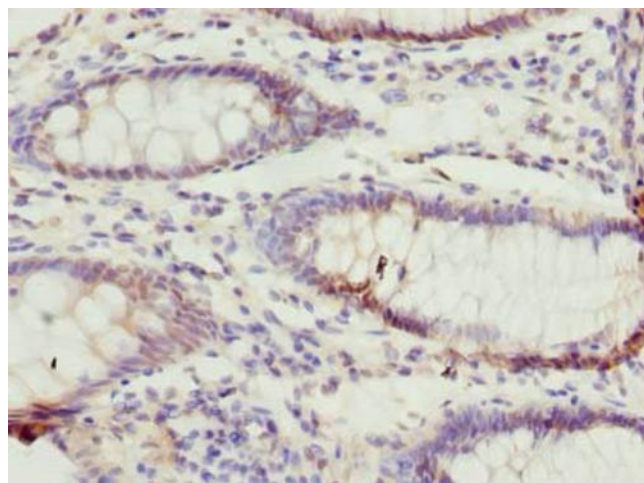


[View online »](#)

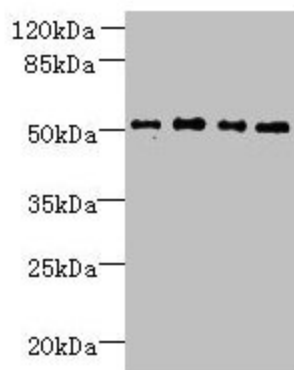
Product images:



Immunohistochemistry of paraffin-embedded human prostate cancer using [TA387283] at dilution of 1:100



Immunohistochemistry of paraffin-embedded human colon cancer using [TA387283] at dilution of 1:100



Western blot

All lanes: TTC38 antibody at 1.5µg/ml

Lane 1: U251 whole cell lysate

Lane 2: Mouse liver tissue

Lane 3: HepG2 whole cell lysate

Lane 4: K562 whole cell lysate

Secondary

Goat polyclonal to rabbit IgG at 1/10000 dilution

Predicted band size: 53 kDa

Observed band size: 53 kDa