

Product datasheet for **TA387282M**

PITRM1 Rabbit Polyclonal Antibody

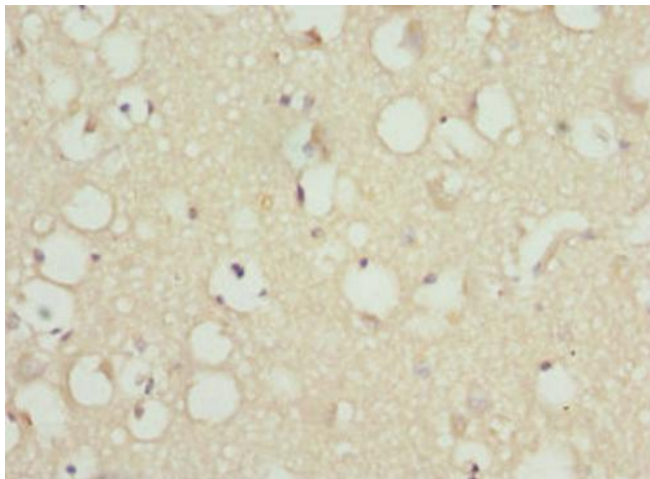
Product data:

Product Type:	Primary Antibodies
Applications:	IHC, WB
Recommended Dilution:	Recommended dilution: WB:1:1000-1:5000, IHC:1:20-1:200
Reactivity:	Mouse, Rat, Human
Host:	Rabbit
Isotype:	IgG
Clonality:	Polyclonal
Immunogen:	Recombinant Human Presequence protease, mitochondrial protein (758-1037AA)
Formulation:	PBS with 0.02% sodium azide, 50% glycerol, pH7.3.
Concentration:	lot specific
Purification:	Antigen Affinity Purified
Conjugation:	Unconjugated
Storage:	Upon receipt, store at -20°C or -80°C. Avoid repeated freeze.
Stability:	1 year from dispatch.
Database Link:	Q5JRX3
Background:	ATP-independent protease that degrades mitochondrial transit peptides after their cleavage. Also degrades other unstructured peptides. Specific for peptides in the range of 10 to 65 residues. Able to degrade amyloid beta A4 (APP) protein when it accumulates in mitochondrion, suggesting a link with Alzheimer disease. Shows a preference for cleavage after small polar residues and before basic residues, but without any positional preference.



[View online »](#)

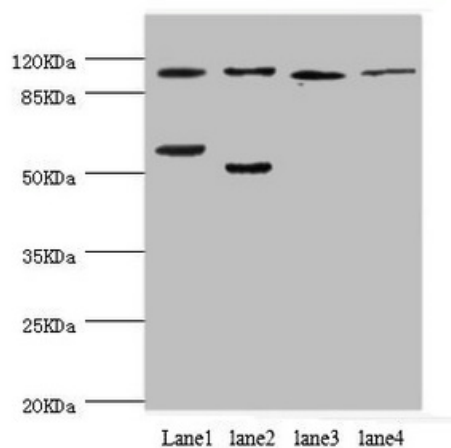
Product images:



Immunohistochemistry of paraffin-embedded human brain tissue using [TA387282] at dilution of 1:100



Immunohistochemistry of paraffin-embedded human skeletal muscle tissue using [TA387282] at dilution of 1:100



Western blot

All lanes: PITRM1 antibody at 2.42 μ g/ml

Lane 1: Mouse placenta tissue

Lane 2: A549 whole cell lysate

Lane 3: Rat gonad tissue

Lane 4: Mouse kidney tissue

Secondary

Goat polyclonal to rabbit IgG at 1/10000 dilution

Predicted band size: 118, 107 kDa

Observed band size: 118, 50 kDa