

Product datasheet for **TA387273M**

EIF2B1 Rabbit Polyclonal Antibody

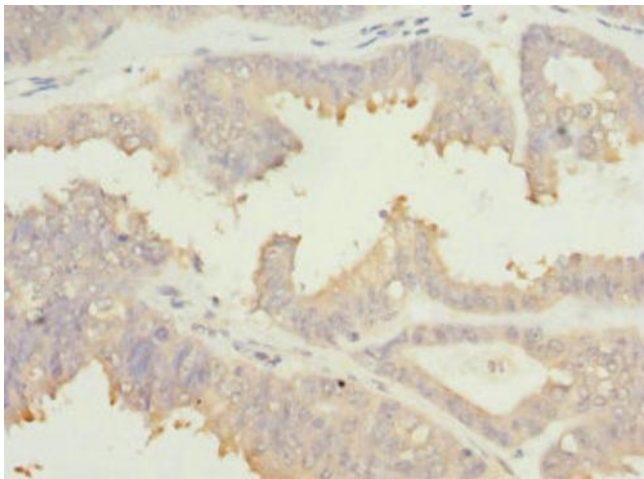
Product data:

Product Type:	Primary Antibodies
Applications:	IHC, WB
Recommended Dilution:	Recommended dilution: WB:1:1000-1:5000, IHC:1:20-1:200
Reactivity:	Mouse, Human
Host:	Rabbit
Isotype:	IgG
Clonality:	Polyclonal
Immunogen:	Recombinant Human Translation initiation factor eIF-2B subunit alpha protein (1-305AA)
Formulation:	PBS with 0.02% sodium azide, 50% glycerol, pH7.3.
Concentration:	lot specific
Purification:	Antigen Affinity Purified
Conjugation:	Unconjugated
Storage:	Upon receipt, store at -20°C or -80°C. Avoid repeated freeze.
Stability:	1 year from dispatch.
Database Link:	Q14232
Background:	Catalyzes the exchange of eukaryotic initiation factor 2-bound GDP for GTP.

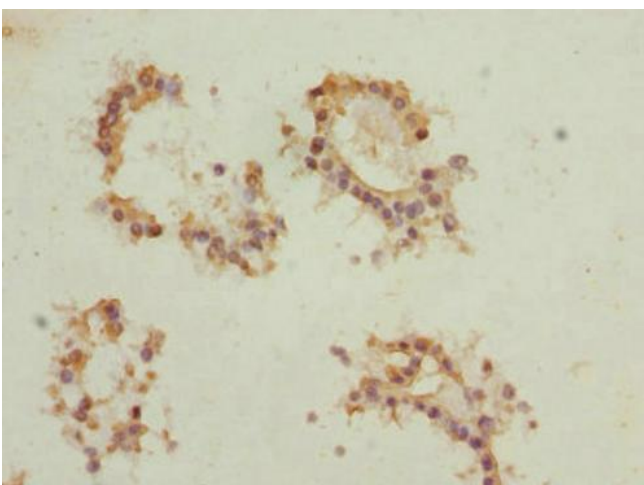


[View online »](#)

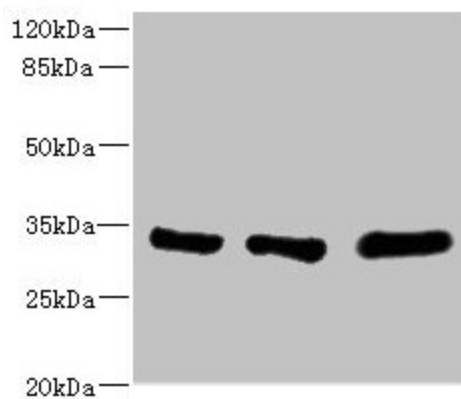
Product images:



Immunohistochemistry of paraffin-embedded human prostate cancer using [TA387273] at dilution of 1:100



Immunohistochemistry of paraffin-embedded human breast cancer using [TA387273] at dilution of 1:100



Western blot

All lanes: EIF2B1 antibody at 5.14 μ g/ml

Lane 1: K562 whole cell lysate

Lane 2: Mouse brain tissue

Lane 3: Jurkat whole cell lysate

Secondary

Goat polyclonal to rabbit IgG at 1/10000 dilution

Predicted band size: 34, 25 kDa

Observed band size: 34 kDa