

## Product datasheet for **TA387272M**

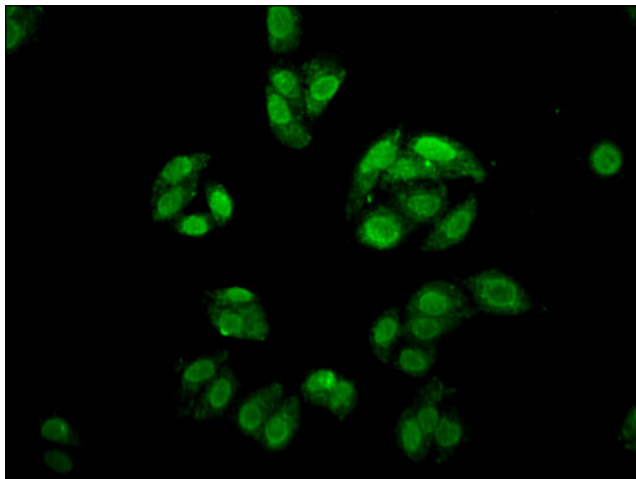
### FOX E3 Rabbit Polyclonal Antibody

#### Product data:

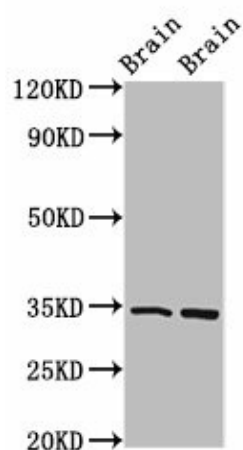
Product Type:	Primary Antibodies
Applications:	IF, WB
Recommended Dilution:	Recommended dilution: WB:1:500-1:5000, IF:1:50-1:200
Reactivity:	Rat, Mouse, Human
Host:	Rabbit
Isotype:	IgG
Clonality:	Polyclonal
Immunogen:	Recombinant Human Forkhead box protein E3 protein (4-74AA)
Formulation:	Preservative: 0.03% Proclin 300 Constituents: 50% Glycerol, 0.01M PBS, pH 7.4
Concentration:	lot specific
Purification:	>95%, Protein G purified
Conjugation:	Unconjugated
Storage:	Upon receipt, store at -20°C or -80°C. Avoid repeated freeze.
Stability:	1 year from dispatch.
Database Link:	<a href="#">Q13461</a>
Background:	Transcription factor that controls lens epithelial cell growth through regulation of proliferation, apoptosis and cell cycle (PubMed:22527307, PubMed:25504734). During lens development, controls the ratio of the lens fiber cells to the cells of the anterior lens epithelium by regulating the rate of proliferation and differentiation (By similarity). Controls lens vesicle closure and subsequent separation of the lens vesicle from ectoderm (By similarity). Controls the expression of DNAJB1 in a pathway that is crucial for the development of the anterior segment of the eye (PubMed:27218149).

[View online »](#)

## Product images:



Immunofluorescence staining of HepG2 cells with [TA387272] at 1:166, counter-stained with DAPI. The cells were fixed in 4% formaldehyde, permeabilized using 0.2% Triton X-100 and blocked in 10% normal Goat Serum. The cells were then incubated with the antibody overnight at 4°C. The secondary antibody was Alexa Fluor 488-conjugated AffiniPure Goat Anti-Rabbit IgG(H+L).



Western Blot  
Positive WB detected in: Mouse brain tissue, Rat brain tissue  
All lanes: FOX E3 antibody at 4µg/ml  
Secondary  
Goat polyclonal to rabbit IgG at 1/50000 dilution  
Predicted band size: 34 kDa  
Observed band size: 34 kDa