

Product datasheet for **TA387270M**

IFRD2 Rabbit Polyclonal Antibody

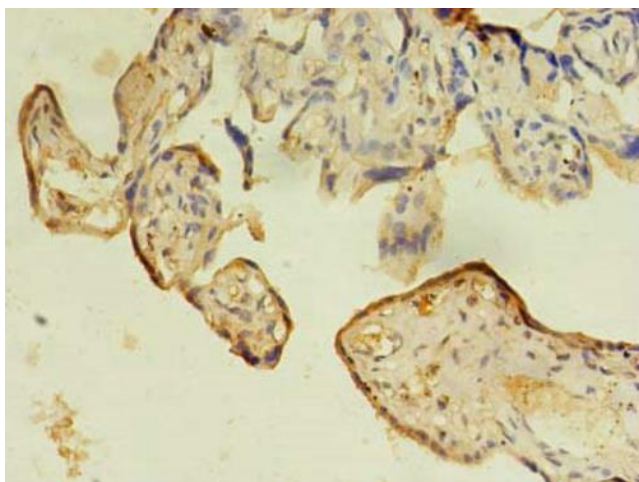
Product data:

Product Type:	Primary Antibodies
Applications:	IHC, WB
Recommended Dilution:	Recommended dilution: WB:1:500-1:2000, IHC:1:20-1:200
Reactivity:	Human
Host:	Rabbit
Isotype:	IgG
Clonality:	Polyclonal
Immunogen:	Recombinant Human Interferon-related developmental regulator 2 protein (1-202AA)
Formulation:	Preservative: 0.03% Proclin 300 Constituents: 50% Glycerol, 0.01M PBS, PH 7.4
Concentration:	lot specific
Purification:	>95%, Protein G purified
Conjugation:	Unconjugated
Storage:	Upon receipt, store at -20°C or -80°C. Avoid repeated freeze.
Stability:	1 year from dispatch.
Database Link:	Q12894
Background:	nucleus



[View online »](#)

Product images:



Immunohistochemistry of paraffin-embedded human placenta tissue using [TA387270] at dilution of 1:100



Western blot
All lanes: IFRD2 antibody at 12 μ g/ml
Lane 1: Hela whole cell lysate
Lane 2: PC-3 whole cell lysate
Secondary
Goat polyclonal to rabbit IgG at 1/10000 dilution
Predicted band size: 55, 66 kDa
Observed band size: 55 kDa