

Product datasheet for **TA387268M**

HYAL1 Rabbit Polyclonal Antibody

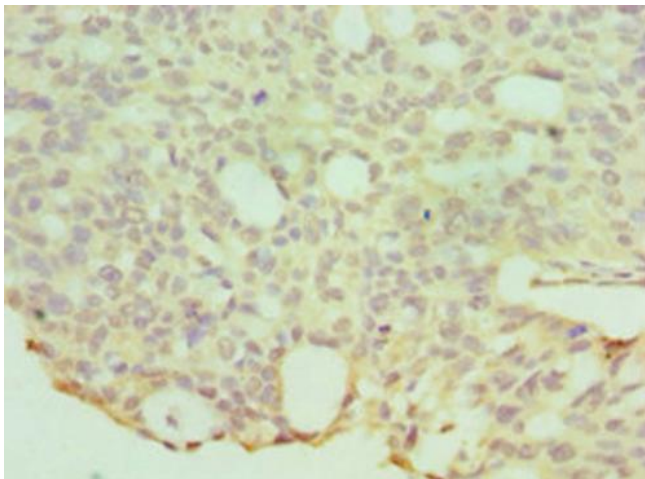
Product data:

Product Type:	Primary Antibodies
Applications:	IHC, WB
Recommended Dilution:	Recommended dilution: WB:1:500-1:2000, IHC:1:20-1:200
Reactivity:	Human
Host:	Rabbit
Isotype:	IgG
Clonality:	Polyclonal
Immunogen:	Recombinant Human Hyaluronidase-1 protein (136-435AA)
Formulation:	PBS with 0.02% sodium azide, 50% glycerol, pH7.3.
Concentration:	lot specific
Purification:	Antigen Affinity Purified
Conjugation:	Unconjugated
Storage:	Upon receipt, store at -20°C or -80°C. Avoid repeated freeze.
Stability:	1 year from dispatch.
Database Link:	Q12794
Background:	May have a role in promoting tumor progression. May block the TGFB1-enhanced cell growth.

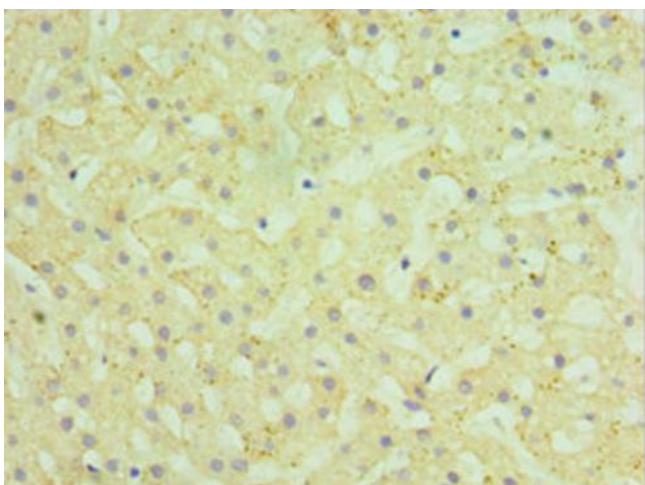


[View online »](#)

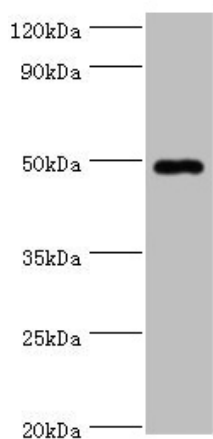
Product images:



Immunohistochemistry of paraffin-embedded human endometrial cancer using [TA387268] at dilution of 1:100



Immunohistochemistry of paraffin-embedded human liver tissue using [TA387268] at dilution of 1:100



Western blot

All lanes: HYAL1 antibody at 2 μ g/ml + HepG2 whole cell lysate

Secondary

Goat polyclonal to rabbit IgG at 1/10000 dilution

Predicted band size: 49, 46, 28, 24, 20, 11, 38 kDa

Observed band size: 49 kDa