

Product datasheet for **TA387266M**

PCDH1 Rabbit Polyclonal Antibody

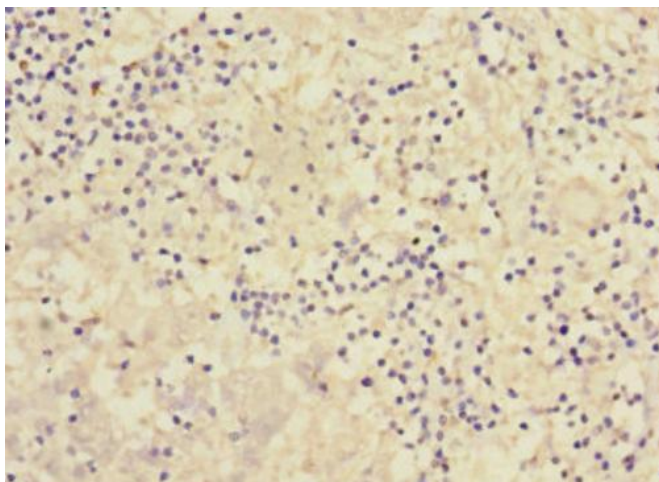
Product data:

Product Type:	Primary Antibodies
Applications:	IHC, WB
Recommended Dilution:	Recommended dilution: WB:1:1000-1:5000, IHC:1:20-1:200
Reactivity:	Mouse, Human
Host:	Rabbit
Isotype:	IgG
Clonality:	Polyclonal
Immunogen:	Recombinant Human Protocadherin-1 protein (60-220AA)
Formulation:	PBS with 0.02% sodium azide, 50% glycerol, pH7.3.
Concentration:	lot specific
Purification:	Antigen Affinity Purified
Conjugation:	Unconjugated
Storage:	Upon receipt, store at -20°C or -80°C. Avoid repeated freeze.
Stability:	1 year from dispatch.
Database Link:	Q08174
Background:	May be involved in cell-cell interaction processes and in cell adhesion.

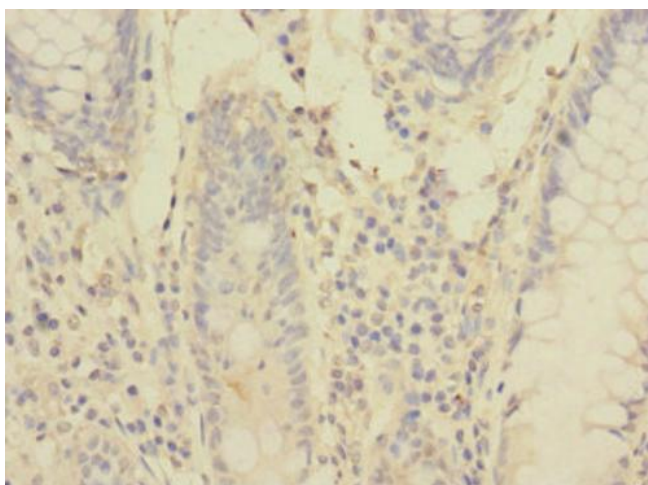


[View online »](#)

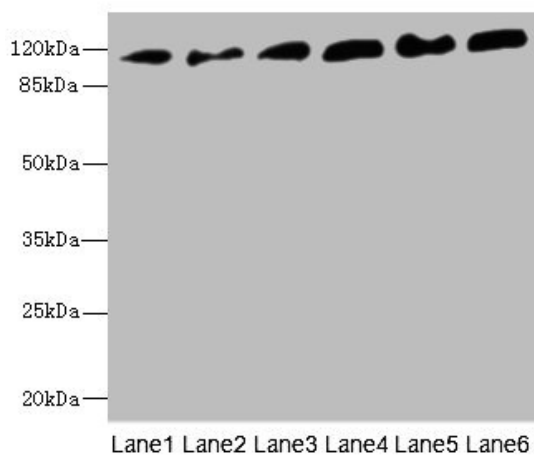
Product images:



Immunohistochemistry of paraffin-embedded human liver cancer using [TA387266] at dilution of 1:100



Immunohistochemistry of paraffin-embedded human colon cancer using [TA387266] at dilution of 1:100



Western blot

All lanes: PCDH1 antibody at 2.56µg/ml

Lane 1: A431 whole cell lysate

Lane 2: Human breast cancer cell

Lane 3: Jurkat whole cell lysate

Lane 4: Hela whole cell lysate

Lane 5: NIH/3T3 whole cell lysate

Lane 6: 293T whole cell lysate

Secondary

Goat polyclonal to rabbit IgG at 1/10000 dilution

Predicted band size: 115, 134 kDa

Observed band size: 115 kDa