

## Product datasheet for **TA387265M**

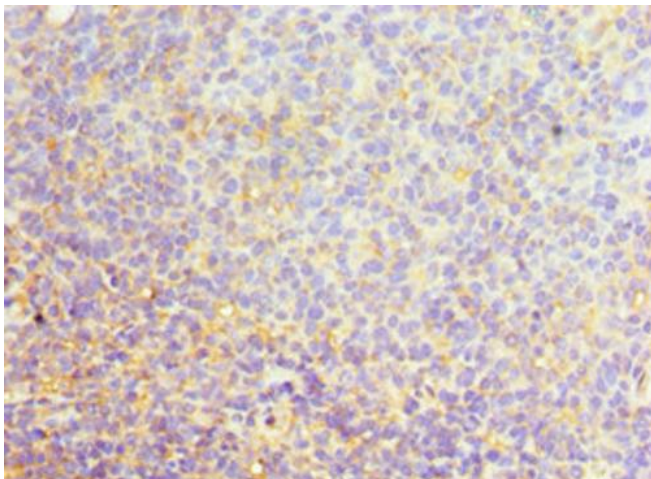
### **SRSF4 Rabbit Polyclonal Antibody**

#### **Product data:**

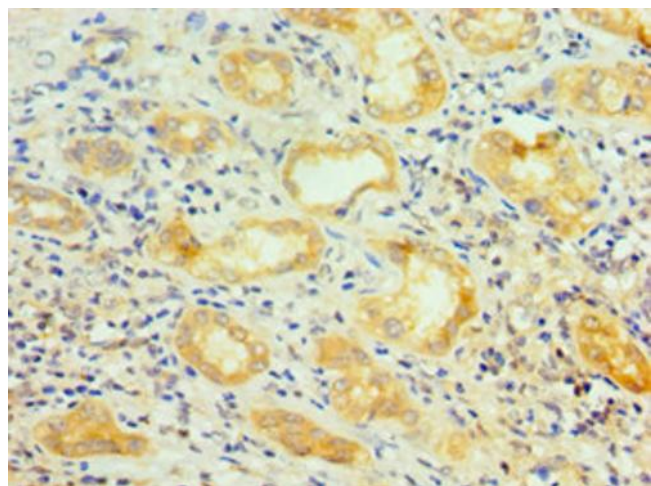
Product Type:	Primary Antibodies
Applications:	IHC, WB
Recommended Dilution:	Recommended dilution: WB:1:200-1:1000, IHC:1:20-1:200
Reactivity:	Human
Host:	Rabbit
Isotype:	IgG
Clonality:	Polyclonal
Immunogen:	Recombinant Human Serine/arginine-rich splicing factor 4 protein (1-180AA)
Formulation:	PBS with 0.02% sodium azide, 50% glycerol, pH7.3.
Concentration:	lot specific
Purification:	Antigen Affinity Purified
Conjugation:	Unconjugated
Storage:	Upon receipt, store at -20°C or -80°C. Avoid repeated freeze.
Stability:	1 year from dispatch.
Database Link:	<a href="#">Q08170</a>
Background:	Plays a role in alternative splice site selection during pre-mRNA splicing. Represses the splicing of MAPT/Tau exon 10.

[View online »](#)

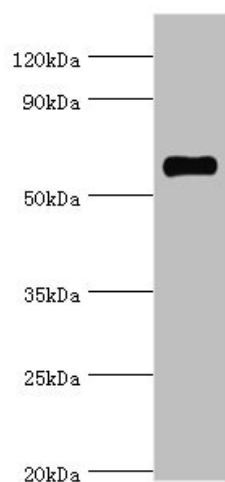
## Product images:



Immunohistochemistry of paraffin-embedded human tonsil tissue using [TA387265] at dilution of 1:100



Immunohistochemistry of paraffin-embedded human kidney tissue using [TA387265] at dilution of 1:100



Western blot

All lanes: SRSF4 antibody at 4 $\mu$ g/ml + HeLa whole cell lysate

Secondary

Goat polyclonal to rabbit IgG at 1/10000 dilution

Predicted band size: 57 kDa

Observed band size: 57 kDa