

Product datasheet for **TA387255**

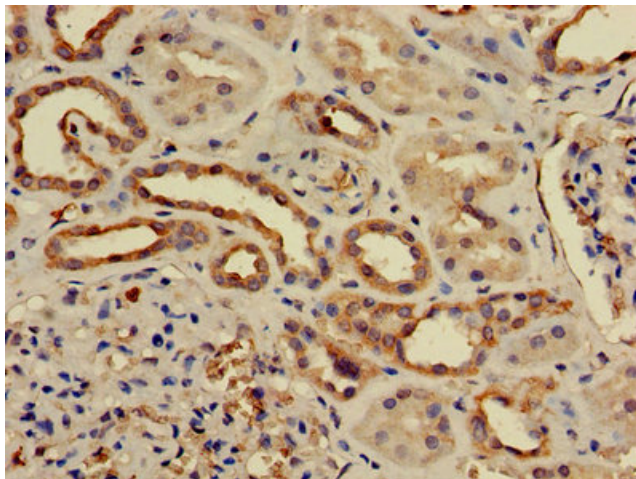
PPP2CB Rabbit Polyclonal Antibody

Product data:

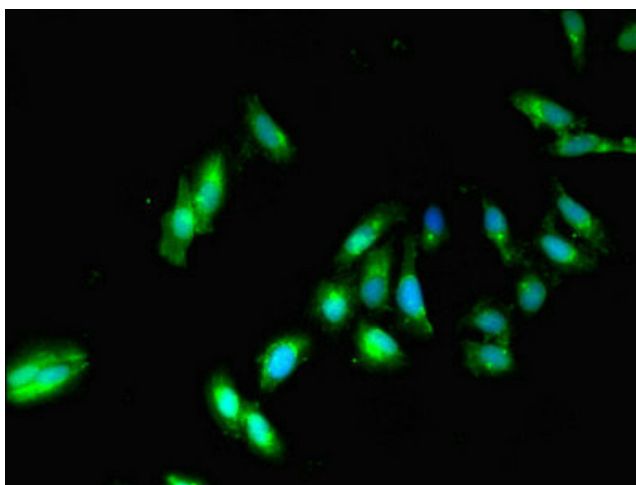
Product Type:	Primary Antibodies
Applications:	IF, IHC, WB
Recommended Dilution:	Recommended dilution: WB:1:500-1:2000, IHC:1:20-1:200, IF:1:50-1:200
Reactivity:	Human
Host:	Rabbit
Isotype:	IgG
Clonality:	Polyclonal
Immunogen:	Recombinant Human Serine/threonine-protein phosphatase 2A catalytic subunit beta isoform protein (1-309AA)
Formulation:	Preservative: 0.03% Proclin 300 Constituents: 50% Glycerol, 0.01M PBS, PH 7.4
Concentration:	lot specific
Purification:	>95%, Protein G purified
Conjugation:	Unconjugated
Storage:	Upon receipt, store at -20°C or -80°C. Avoid repeated freeze.
Stability:	1 year from dispatch.
Database Link:	P62714
Background:	PP2A can modulate the activity of phosphorylase B kinase casein kinase 2, mitogen-stimulated S6 kinase, and MAP-2 kinase.



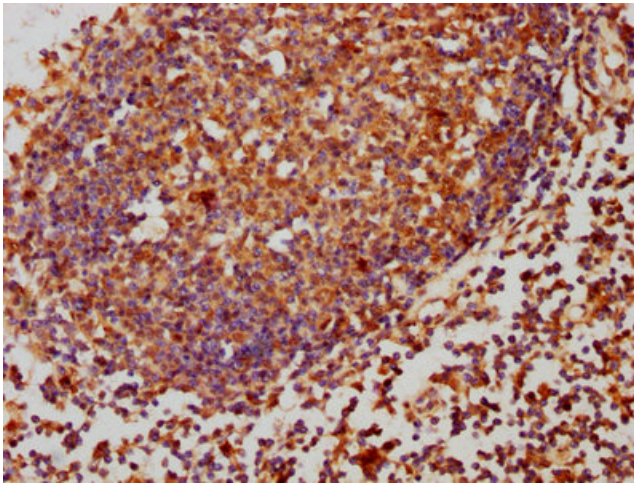
[View online »](#)

Product images:

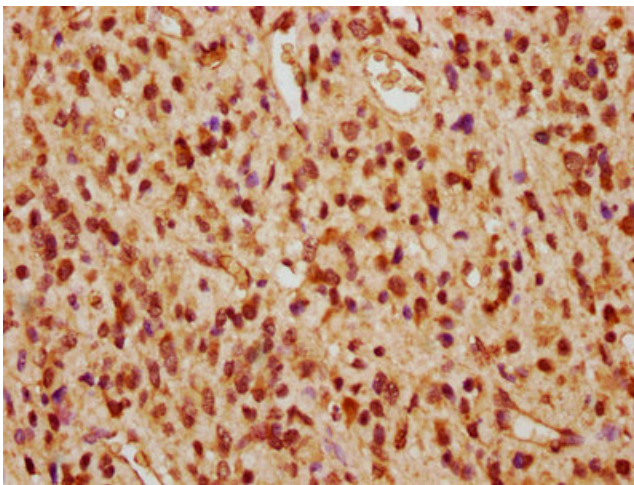
Immunohistochemistry of paraffin-embedded human kidney tissue using TA387255 at dilution of 1:50



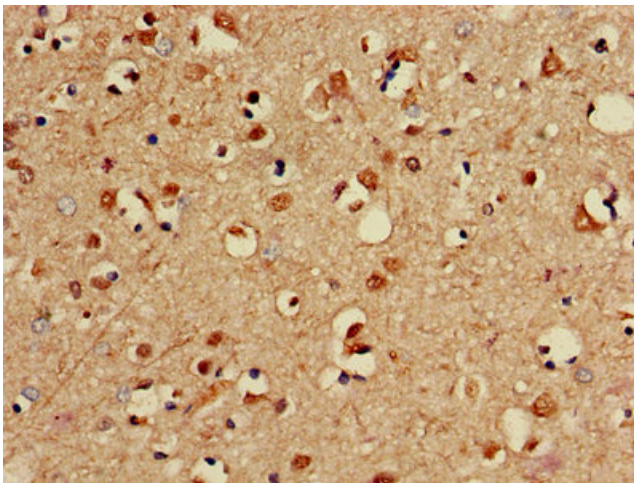
Immunofluorescent analysis of HeLa cells using TA387255 at dilution of 1:100 and Alexa Fluor 488-conjugated AffiniPure Goat Anti-Rabbit IgG(H+L)



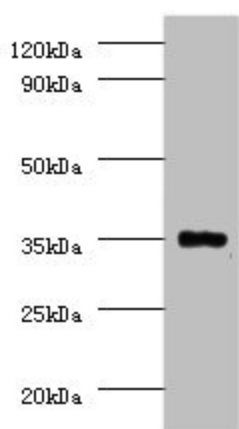
IHC image of TA387255 diluted at 1:260 and staining in paraffin-embedded human lymph node tissue performed on a Leica Bond™ system. After dewaxing and hydration, antigen retrieval was mediated by high pressure in a citrate buffer (pH 6.0). Section was blocked with 10% normal goat serum 30min at RT. Then primary antibody (1% BSA) was incubated at 4°C overnight. The primary is detected by a biotinylated secondary antibody and visualized using an HRP conjugated SP system.



IHC image of TA387255 diluted at 1:260 and staining in paraffin-embedded human glioma performed on a Leica Bond™ system. After dewaxing and hydration, antigen retrieval was mediated by high pressure in a citrate buffer (pH 6.0). Section was blocked with 10% normal goat serum 30min at RT. Then primary antibody (1% BSA) was incubated at 4°C overnight. The primary is detected by a biotinylated secondary antibody and visualized using an HRP conjugated SP system.



Immunohistochemistry of paraffin-embedded human brain tissue using TA387255 at dilution of 1:100



Western blot

All lanes: Serine/threonine-protein phosphatase
2A catalytic subunit beta isoform Antibody at
2 μ g/ml + EC109 whole cell lysate

Secondary

Goat polyclonal to rabbit IgG at 1/15000 dilution

Predicted band size: 34 kDa

Observed band size: 34 kDa