

## Product datasheet for **TA387254**

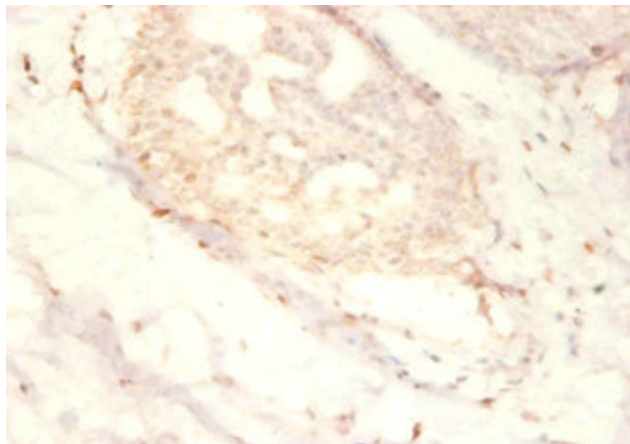
### SNRPG Rabbit Polyclonal Antibody

#### Product data:

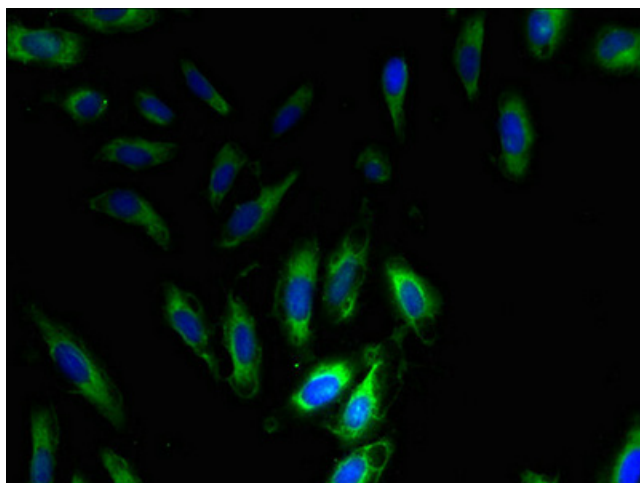
Product Type:	Primary Antibodies
Applications:	IF, IHC, WB
Recommended Dilution:	Recommended dilution: WB:1:500-1:2000, IHC:1:20-1:200, IF:1:50-1:200
Reactivity:	Human
Host:	Rabbit
Isotype:	IgG
Clonality:	Polyclonal
Immunogen:	Recombinant Human Small nuclear ribonucleoprotein G protein (1-76AA)
Formulation:	Preservative: 0.03% Proclin 300 Constituents: 50% Glycerol, 0.01M PBS, PH 7.4
Concentration:	lot specific
Purification:	>95%, Protein G purified
Conjugation:	Unconjugated
Storage:	Upon receipt, store at -20°C or -80°C. Avoid repeated freeze.
Stability:	1 year from dispatch.
Database Link:	<a href="#">P62308</a>
Background:	Appears to function in the U7 snRNP complex that is involved in histone 3'-end processing. Associated with snRNP U1, U2, U4/U6 and U5. Component of the heptameric ring U7 snRNP complex, or U7 Sm protein core complex, at least composed of LSM10, LSM11, SNRPB, SNRPD3, SNRPE, SNRPF, SNRPG and U7 snRNA. Formation of the U7 snRNP is an ATP-dependent process mediated by a specialized SMN complex containing at least the Sm protein core complex and additionally, the U7-specific LSM10 and LSM11 proteins. Identified in the spliceosome C complex. Component of the U11/U12 snRNPs that are part of the U12-type spliceosome. Interacts with TACC1.



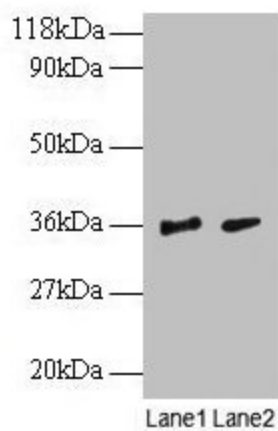
[View online »](#)

**Product images:**

Immunohistochemistry of paraffin-embedded human mammary gland tissue using TA387254 at dilution of 1:50



Immunofluorescent analysis of HeLa cells using TA387254 at dilution of 1:100 and Alexa Fluor 488-conjugated AffiniPure Goat Anti-Rabbit IgG(H+L)



## Western blot

All lanes: SNRPG antibody at 2 $\mu$ g/ml

Lane 1: EC109 whole cell lysate

Lane 2: 293T whole cell lysate

Secondary

Goat polyclonal to rabbit IgG at 1/15000 dilution

Predicted band size: 9 kDa

Observed band size: 36 kDa