

## Product datasheet for **TA387252M**

### **RPS8 Rabbit Polyclonal Antibody**

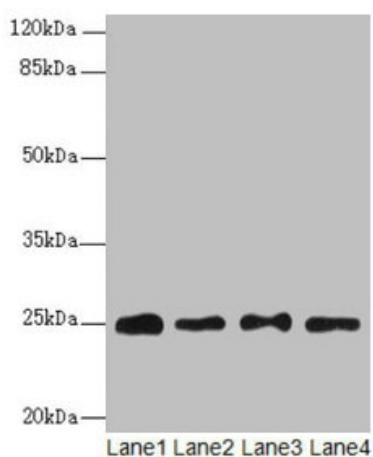
#### **Product data:**

Product Type:	Primary Antibodies
Applications:	WB
Recommended Dilution:	Recommended dilution: WB:1:1000-1:5000
Reactivity:	Mouse, Human
Host:	Rabbit
Isotype:	IgG
Clonality:	Polyclonal
Immunogen:	Recombinant Human 40S ribosomal protein S8 protein (2-208AA)
Formulation:	Preservative: 0.03% Proclin 300 Constituents: 50% Glycerol, 0.01M PBS, PH 7.4
Concentration:	lot specific
Purification:	>95%, Protein G purified
Conjugation:	Unconjugated
Storage:	Upon receipt, store at -20°C or -80°C. Avoid repeated freeze.
Stability:	1 year from dispatch.
Database Link:	<a href="#">P62241</a>
Background:	cytoplasm, cytosol, cytosolic small ribosomal subunit, extracellular exosome, focal adhesion, membrane, nucleus, ribonucleoprotein complex, poly(A) RNA binding, structural constituent of ribosome



[View online »](#)

## Product images:



### Western blot

All lanes: RPS8 antibody at 6µg/ml

Lane 1: HL60 whole cell lysate

Lane 2: THP-1 whole cell lysate

Lane 3: 293T whole cell lysate

Lane 4: Mouse liver tissue

### Secondary

Goat polyclonal to rabbit IgG at 1/10000 dilution

Predicted band size: 25 kDa

Observed band size: 25 kDa