

Product datasheet for **TA387248**

FBXW4 Rabbit Polyclonal Antibody

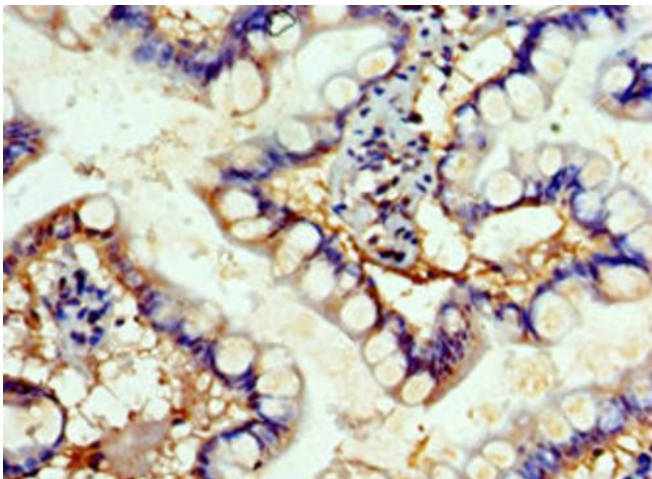
Product data:

Product Type:	Primary Antibodies
Applications:	IHC, WB
Recommended Dilution:	Recommended dilution: WB:1:500-1:2000, IHC:1:20-1:200
Reactivity:	Mouse, Human
Host:	Rabbit
Isotype:	IgG
Clonality:	Polyclonal
Immunogen:	Recombinant Human F-box/WD repeat-containing protein 4 protein (143-412AA)
Formulation:	PBS with 0.02% sodium azide, 50% glycerol, pH7.3.
Concentration:	lot specific
Purification:	Antigen Affinity Purified
Conjugation:	Unconjugated
Storage:	Upon receipt, store at -20°C or -80°C. Avoid repeated freeze.
Stability:	1 year from dispatch.
Database Link:	P57775
Background:	Probably recognizes and binds to some phosphorylated proteins and promotes their ubiquitination and degradation. Likely to be involved in key signaling pathways crucial for normal limb development. May participate in Wnt signaling.

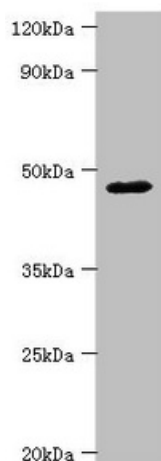


[View online »](#)

Product images:



Immunohistochemistry of paraffin-embedded human small intestine tissue using TA387248 at dilution of 1:100



Western blot
All lanes: FBXW4 antibody at 4 μ g/ml + Mouse skeletal muscle tissue
Secondary
Goat polyclonal to rabbit IgG at 1/10000 dilution
Predicted band size: 46 kDa
Observed band size: 46 kDa