

## Product datasheet for **TA387246**

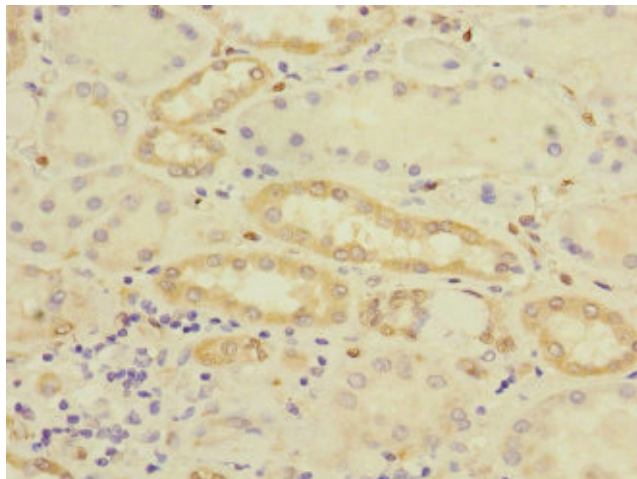
### CRIP2 Rabbit Polyclonal Antibody

#### Product data:

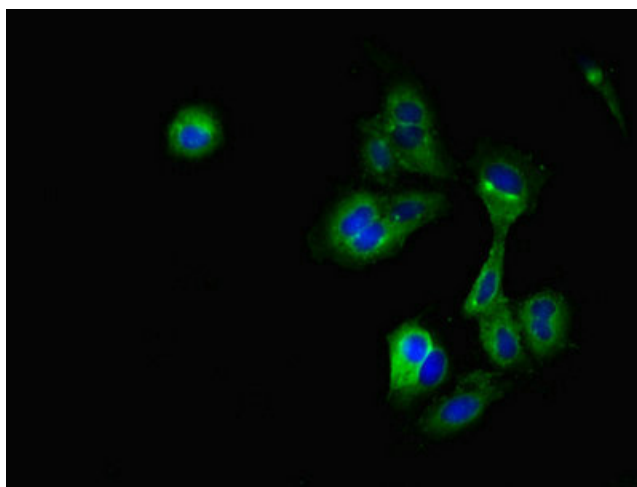
Product Type:	Primary Antibodies
Applications:	IF, IHC, WB
Recommended Dilution:	Recommended dilution: WB:1:500-1:2000, IHC:1:20-1:200, IF:1:50-1:200
Reactivity:	Mouse, Rat, Human
Host:	Rabbit
Isotype:	IgG
Clonality:	Polyclonal
Immunogen:	Recombinant Human Cysteine-rich protein 2 protein (1-208AA)
Formulation:	PBS with 0.02% sodium azide, 50% glycerol, pH7.3.
Concentration:	lot specific
Purification:	Antigen Affinity Purified
Conjugation:	Unconjugated
Storage:	Upon receipt, store at -20°C or -80°C. Avoid repeated freeze.
Stability:	1 year from dispatch.
Database Link:	<a href="#">P52943</a>
Background:	zinc ion binding



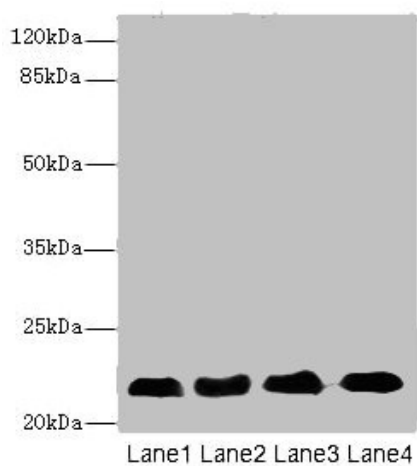
[View online »](#)

**Product images:**

Immunohistochemistry of paraffin-embedded human kidney tissue using TA387246 at dilution of 1:100



Immunofluorescent analysis of HeLa cells using TA387246 at dilution of 1:100 and Alexa Fluor 488-conjugated AffiniPure Goat Anti-Rabbit IgG(H+L)

**Western blot**

All lanes: CRIP2 antibody at 5.93 $\mu$ g/ml

Lane 1: Rat heart tissue

Lane 2: Mouse lung tissue

Lane 3: Hela whole cell lysate

Lane 4: MCF-7 whole cell lysate

Secondary

Goat polyclonal to rabbit IgG at 1/10000 dilution

Predicted band size: 23, 31 kDa

Observed band size: 23 kDa