

## Product datasheet for **TA387244M**

### DGKE Rabbit Polyclonal Antibody

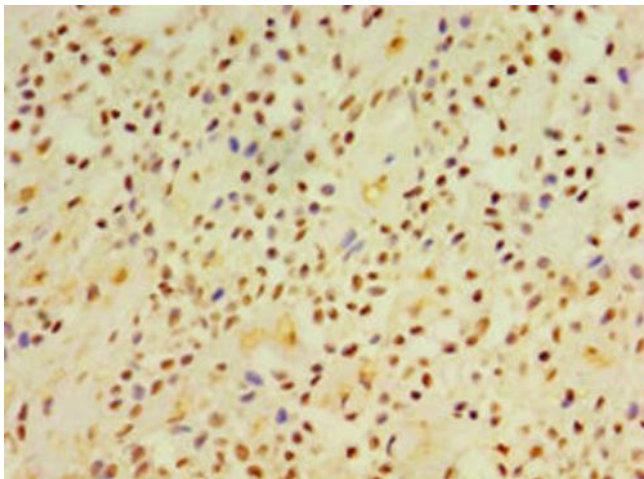
#### Product data:

Product Type:	Primary Antibodies
Applications:	IHC, WB
Recommended Dilution:	Recommended dilution: WB:1:500-1:2000, IHC:1:20-1:200
Reactivity:	Rat, Human
Host:	Rabbit
Isotype:	IgG
Clonality:	Polyclonal
Immunogen:	Recombinant Human Diacylglycerol kinase epsilon protein (40-260AA)
Formulation:	PBS with 0.02% sodium azide, 50% glycerol, pH7.3.
Concentration:	lot specific
Purification:	Antigen Affinity Purified
Conjugation:	Unconjugated
Storage:	Upon receipt, store at -20°C or -80°C. Avoid repeated freeze.
Stability:	1 year from dispatch.
Database Link:	<a href="#">P52429</a>
Background:	Highly selective for arachidonate-containing species of diacylglycerol (DAG). May terminate signals transmitted through arachidonoyl-DAG or may contribute to the synthesis of phospholipids with defined fatty acid composition.

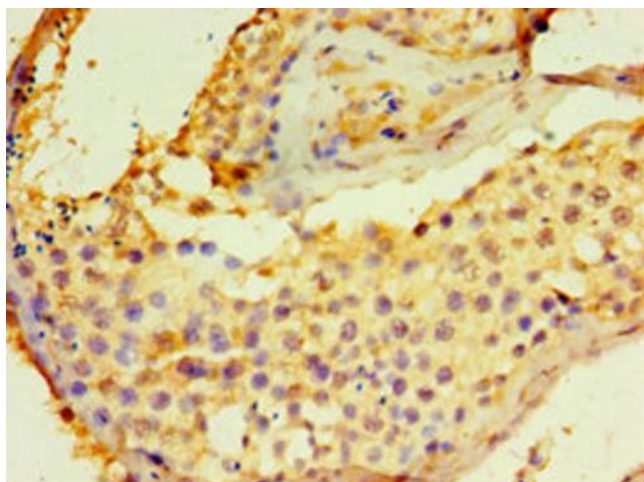


[View online »](#)

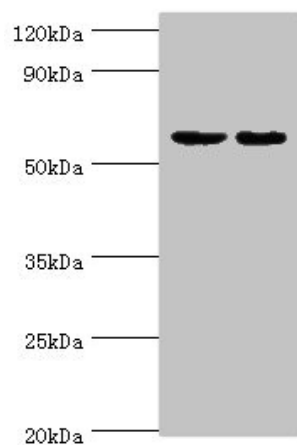
**Product images:**



Immunohistochemistry of paraffin-embedded human breast cancer using [TA387244] at dilution of 1:100



Immunohistochemistry of paraffin-embedded human testis tissue using [TA387244] at dilution of 1:100



Western blot

All lanes: Diacylglycerol kinase epsilon antibody at 5µg/ml

Lane 1: Rat brain tissue

Lane 2: Hela whole cell lysate

Secondary

Goat polyclonal to rabbit IgG at 1/10000 dilution

Predicted band size: 64, 21 kDa

Observed band size: 64 kDa