

## Product datasheet for **TA387239**

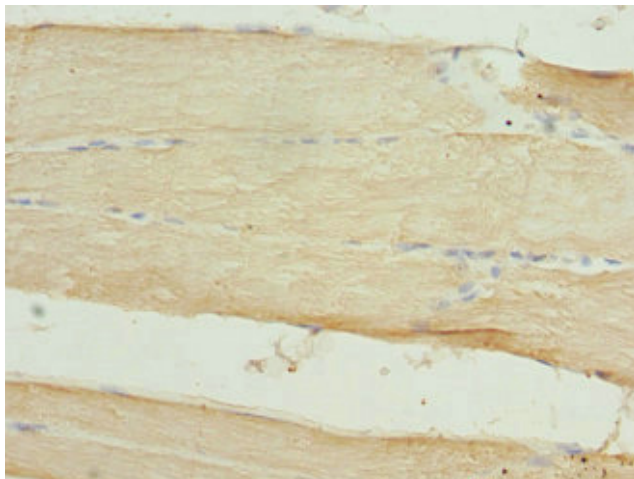
### CLK1 Rabbit Polyclonal Antibody

#### Product data:

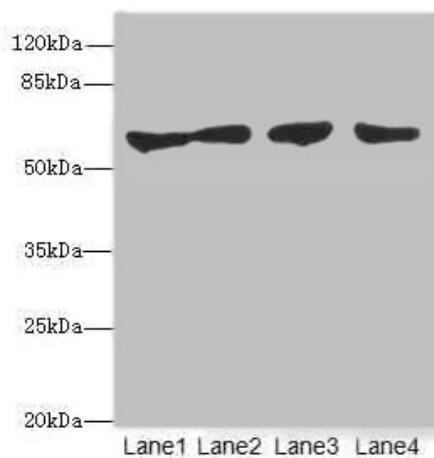
|                       |  |
|-----------------------|--|
| Product Type:         | Primary Antibodies   |
| Applications:         | IHC, WB  |
| Recommended Dilution: | Recommended dilution: WB:1:1000-1:5000, IHC:1:20-1:200   |
| Reactivity:           | Human  |
| Host:                 | Rabbit   |
| Isotype:              | IgG  |
| Clonality:            | Polyclonal   |
| Immunogen:            | Recombinant Human Dual specificity protein kinase CLK1 protein (1-130AA)   |
| Formulation:          | PBS with 0.02% sodium azide, 50% glycerol, pH7.3.  |
| Concentration:        | lot specific   |
| Purification:         | Antigen Affinity Purified  |
| Conjugation:          | Unconjugated   |
| Storage:              | Upon receipt, store at -20°C or -80°C. Avoid repeated freeze.  |
| Stability:            | 1 year from dispatch.  |
| Database Link:        | <a href="#">P49759</a>   |
| Background:           | Dual specificity kinase acting on both serine/threonine and tyrosine-containing substrates. Phosphorylates serine- and arginine-rich (SR) proteins of the spliceosomal complex and may be a constituent of a network of regulatory mechanisms that enable SR proteins to control RNA splicing. Phosphorylates: SRSF1, SRSF3 and PTPN1. Regulates the alternative splicing of tissue factor (F3) pre-mRNA in endothelial cells and adenovirus E1A pre-mRNA. |



[View online »](#)

**Product images:**

Immunohistochemistry of paraffin-embedded human skeletal muscle tissue using TA387239 at dilution of 1:100



Western blot

All lanes: CLK1 antibody at 3.07 $\mu$ g/ml

Lane 1: HepG2 whole cell lysate

Lane 2: Jurkat whole cell lysate

Lane 3: U251 whole cell lysate

Lane 4: A549 whole cell lysate

Secondary

Goat polyclonal to rabbit IgG at 1/10000 dilution

Predicted band size: 58, 17, 62 kDa

Observed band size: 58 kDa