

## Product datasheet for **TA387235M**

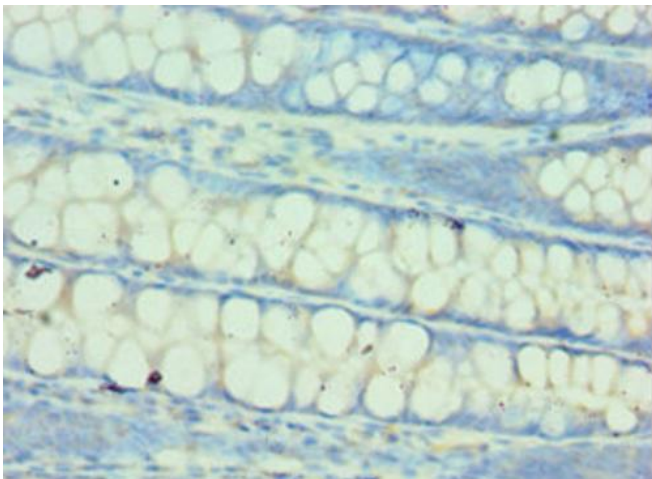
### QARS1 Rabbit Polyclonal Antibody

#### Product data:

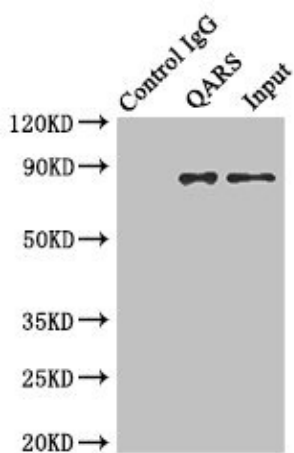
Product Type:	Primary Antibodies
Applications:	IHC, IP, WB
Recommended Dilution:	Recommended dilution: WB:1:1000-1:5000, IHC:1:20-1:200, IP:1:200-1:2000
Reactivity:	Human
Host:	Rabbit
Isotype:	IgG
Clonality:	Polyclonal
Immunogen:	Recombinant Human Glutamine--tRNA ligase protein (1-250AA)
Formulation:	PBS with 0.02% sodium azide, 50% glycerol, pH7.3.
Concentration:	lot specific
Purification:	Antigen Affinity Purified
Conjugation:	Unconjugated
Storage:	Upon receipt, store at -20°C or -80°C. Avoid repeated freeze.
Stability:	1 year from dispatch.
Database Link:	<a href="#">P47897</a>
Background:	Plays a critical role in brain development.



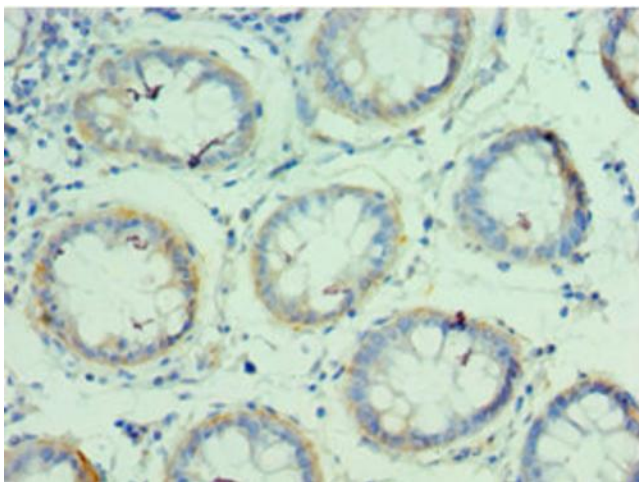
[View online »](#)

**Product images:**

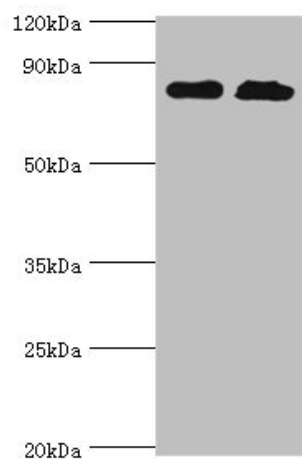
Immunohistochemistry of paraffin-embedded human colon tissue using [TA387235] at dilution of 1:100



Immunoprecipitating QARS in HeLa whole cell lysate  
Lane 1: Rabbit control IgG instead of (1 $\mu$ g) instead of [TA387235] in HeLa whole cell lysate. For western blotting, a HRP-conjugated anti-rabbit IgG, specific to the non-reduced form of IgG was used as the Secondary antibody (1/50000)  
Lane 2: [TA387235] (4 $\mu$ g) + HeLa whole cell lysate (500 $\mu$ g)  
Lane 3: HeLa whole cell lysate (20 $\mu$ g)



Immunohistochemistry of paraffin-embedded human colon cancer using [TA387235] at dilution of 1:100



Western blot

All lanes: Glutamine--tRNA ligase antibody at 2 $\mu$ g/ml

Lane 1: PC-3 whole cell lysate

Lane 2: Hela whole cell lysate

Secondary

Goat polyclonal to rabbit IgG at 1/10000 dilution

Predicted band size: 88, 87 kDa

Observed band size: 88 kDa