

## Product datasheet for **TA387233M**

### **GNL1 Rabbit Polyclonal Antibody**

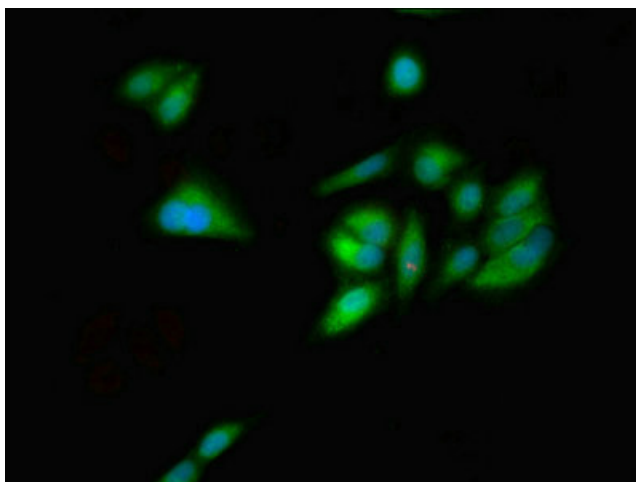
#### **Product data:**

Product Type:	Primary Antibodies
Applications:	IF, WB
Recommended Dilution:	Recommended dilution: WB:1:500-1:5000, IF:1:50-1:200
Reactivity:	Human
Host:	Rabbit
Isotype:	IgG
Clonality:	Polyclonal
Immunogen:	Recombinant Human Guanine nucleotide-binding protein-like 1 protein (251-500AA)
Formulation:	Preservative: 0.03% Proclin 300 Constituents: 50% Glycerol, 0.01M PBS, PH 7.4
Concentration:	lot specific
Purification:	>95%, Protein G purified
Conjugation:	Unconjugated
Storage:	Upon receipt, store at -20°C or -80°C. Avoid repeated freeze.
Stability:	1 year from dispatch.
Database Link:	<a href="#">P36915</a>
Background:	Possible regulatory or functional link with the histocompatibility cluster.

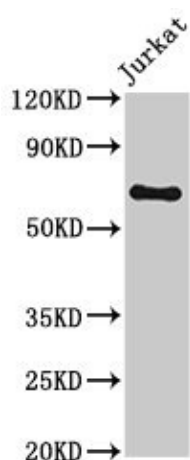


[View online »](#)

## Product images:



Immunofluorescent analysis of HeLa cells using [TA387233] at dilution of 1:100 and Alexa Fluor 488-conjugated AffiniPure Goat Anti-Rabbit IgG(H+L)



Western Blot  
Positive WB detected in: Jurkat whole cell lysate  
All lanes: GNL1 antibody at 3.2µg/ml  
Secondary  
Goat polyclonal to rabbit IgG at 1/50000 dilution  
Predicted band size: 69, 48 kDa  
Observed band size: 69 kDa