

Product datasheet for **TA387232**

MAS1L Rabbit Polyclonal Antibody

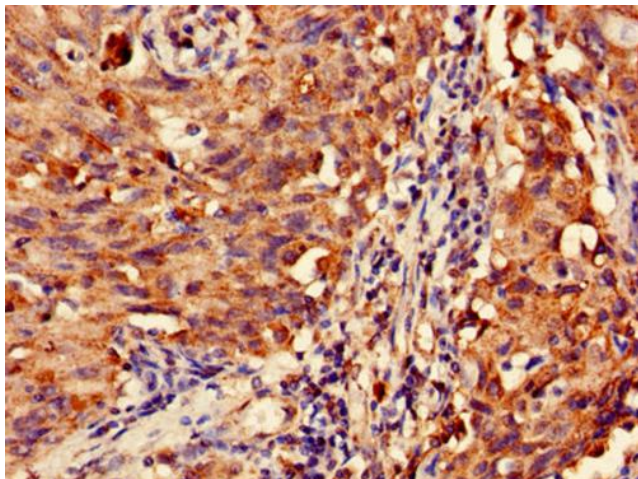
Product data:

Product Type:	Primary Antibodies
Applications:	IF, IHC, WB
Recommended Dilution:	Recommended dilution: WB:1:500-1:2000, IHC:1:20-1:200, IF:1:50-1:200
Reactivity:	Human
Host:	Rabbit
Isotype:	IgG
Clonality:	Polyclonal
Immunogen:	Recombinant Human Mas-related G-protein coupled receptor MRG protein (318-378AA)
Formulation:	Preservative: 0.03% Proclin 300 Constituents: 50% Glycerol, 0.01M PBS, PH 7.4
Concentration:	lot specific
Purification:	>95%, Protein G purified
Conjugation:	Unconjugated
Storage:	Upon receipt, store at -20°C or -80°C. Avoid repeated freeze.
Stability:	1 year from dispatch.
Database Link:	P35410
Background:	cytoplasm, integral component of membrane, integral component of plasma membrane, nucleoplasm, plasma membrane, G-protein coupled receptor activity, G-protein coupled receptor signaling pathway

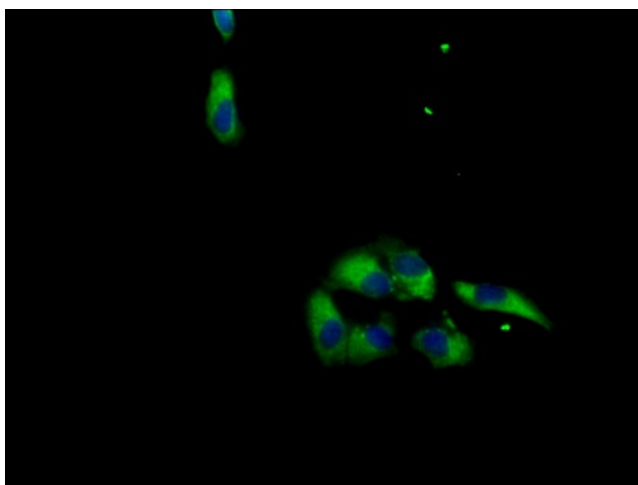


[View online »](#)

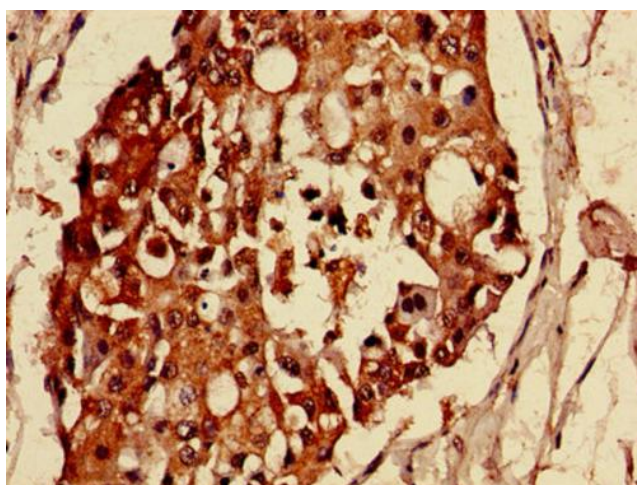
Product images:



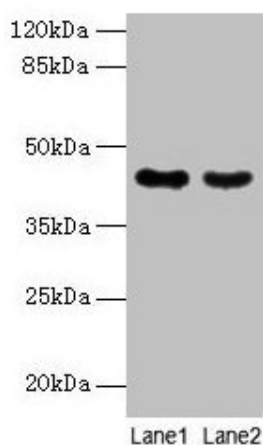
Immunohistochemistry of paraffin-embedded human lung cancer using TA387232 at dilution of 1:100



Immunofluorescent analysis of HepG2 cells using TA387232 at dilution of 1:100 and Alexa Fluor 488-conjugated AffiniPure Goat Anti-Rabbit IgG(H+L)



Immunohistochemistry of paraffin-embedded human breast cancer using TA387232 at dilution of 1:100



Western blot
All lanes: MAS1L antibody at 2 μ g/ml
Lane 1: Colo320 whole cell lysate
Lane 2: Hela whole cell lysate
Secondary
Goat polyclonal to rabbit IgG at 1/10000 dilution
Predicted band size: 43 kDa
Observed band size: 43 kDa