

## Product datasheet for **TA387230M**

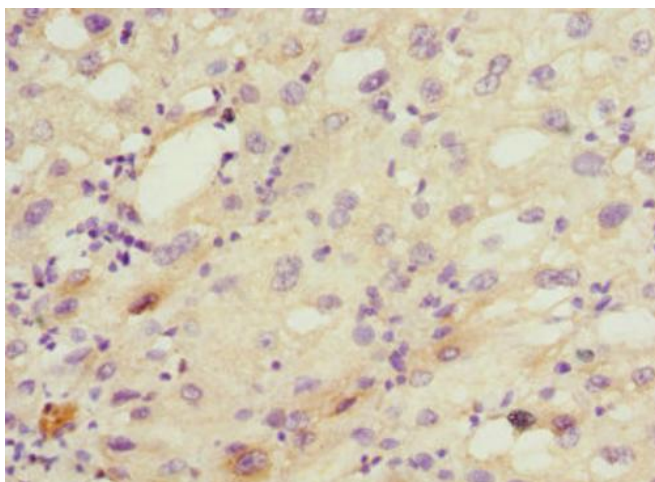
### **CYP2C18 Rabbit Polyclonal Antibody**

#### **Product data:**

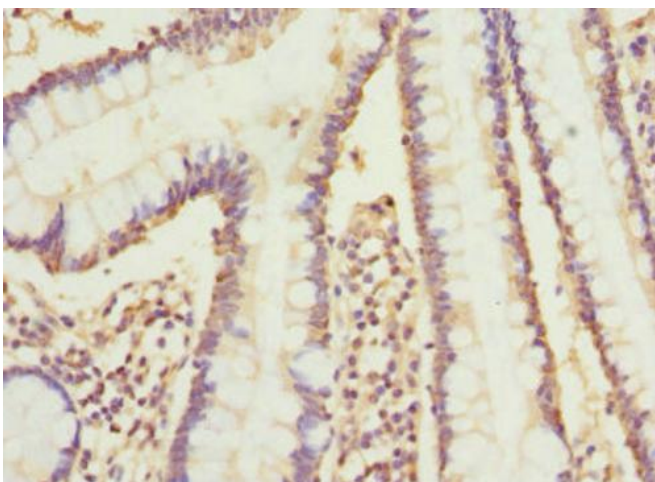
Product Type:	Primary Antibodies
Applications:	IHC, WB
Recommended Dilution:	Recommended dilution: WB:1:1000-1:5000, IHC:1:20-1:200
Reactivity:	Human
Host:	Rabbit
Isotype:	IgG
Clonality:	Polyclonal
Immunogen:	Recombinant Human Cytochrome P450 2C18 protein (231-490AA)
Formulation:	PBS with 0.02% sodium azide, 50% glycerol, pH7.3.
Concentration:	lot specific
Purification:	Antigen Affinity Purified
Conjugation:	Unconjugated
Storage:	Upon receipt, store at -20°C or -80°C. Avoid repeated freeze.
Stability:	1 year from dispatch.
Database Link:	<a href="#">P33260</a>
Background:	Cytochromes P450 are a group of heme-thiolate monooxygenases. In liver microsomes, this enzyme is involved in an NADPH-dependent electron transport pathway. It oxidizes a variety of structurally unrelated compounds, including steroids, fatty acids, and xenobiotics.

[View online »](#)

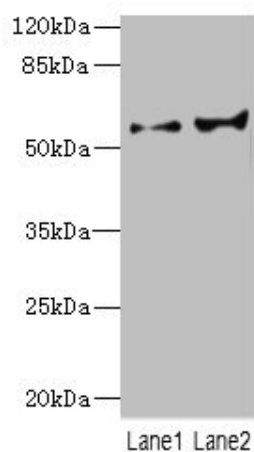
## Product images:



Immunohistochemistry of paraffin-embedded human liver cancer using [TA387230] at dilution of 1:100



Immunohistochemistry of paraffin-embedded human small intestine tissue using [TA387230] at dilution of 1:100



**Western blot**

All lanes: CYP2C18 antibody at 5.98µg/ml

Lane 1: HL60 whole cell lysate

Lane 2: 293T whole cell lysate

Secondary

Goat polyclonal to rabbit IgG at 1/10000 dilution

Predicted band size: 56, 49 kDa

Observed band size: 56 kDa