

## Product datasheet for **TA387228M**

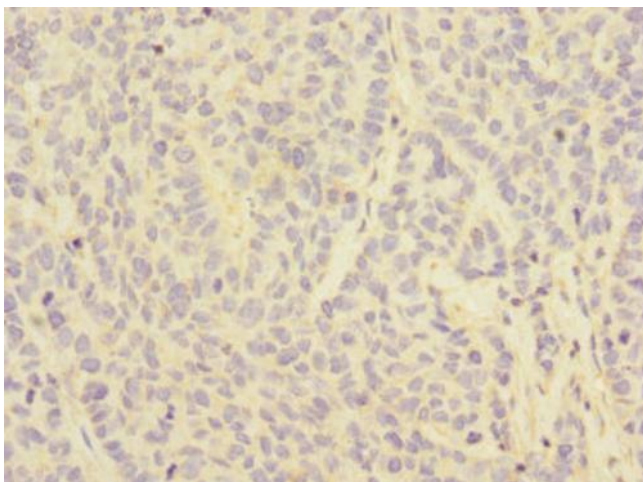
### FCGR2C Rabbit Polyclonal Antibody

#### Product data:

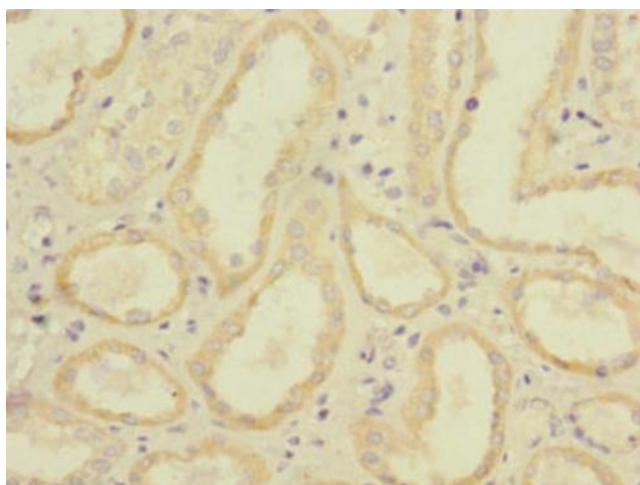
Product Type:	Primary Antibodies
Applications:	IHC, WB
Recommended Dilution:	Recommended dilution: WB:1:1000-1:5000, IHC:1:20-1:200
Reactivity:	Human
Host:	Rabbit
Isotype:	IgG
Clonality:	Polyclonal
Immunogen:	Recombinant Human Low affinity immunoglobulin gamma Fc region receptor II-c protein (43-223AA)
Formulation:	PBS with 0.02% sodium azide, 50% glycerol, pH7.3.
Concentration:	lot specific
Purification:	Antigen Affinity Purified
Conjugation:	Unconjugated
Storage:	Upon receipt, store at -20°C or -80°C. Avoid repeated freeze.
Stability:	1 year from dispatch.
Database Link:	<a href="#">P31995</a>
Background:	Receptor for the Fc region of complexed immunoglobulins gamma. Low affinity receptor. Involved in a variety of effector and regulatory functions such as phagocytosis of immune complexes and modulation of antibody production by B-cells.



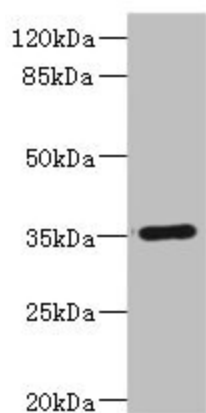
[View online »](#)

**Product images:**

Immunohistochemistry of paraffin-embedded human ovarian cancer using [TA387228] at dilution of 1:100



Immunohistochemistry of paraffin-embedded human kidney tissue using [TA387228] at dilution of 1:100



Western blot

All lanes: FCGR2C antibody IgG at 1.67 $\mu$ g/ml +  
Human Burkitt lymphoma cells

Secondary

Goat polyclonal to rabbit IgG at 1/10000 dilution

Predicted band size: 36, 31, 30, 26 kDa

Observed band size: 36 kDa