

Product datasheet for **TA387227**

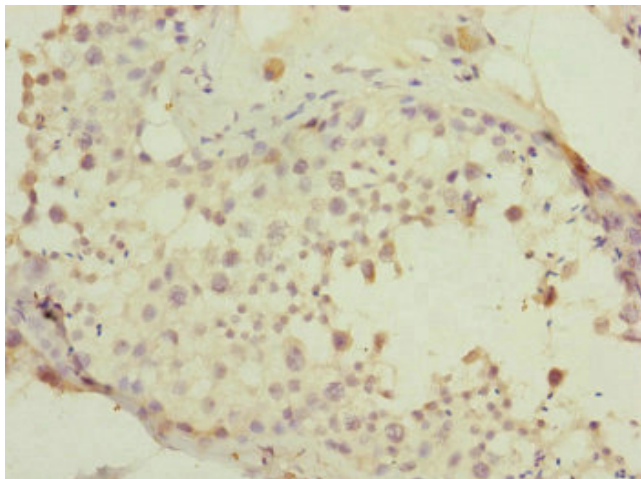
PDHA2 Rabbit Polyclonal Antibody

Product data:

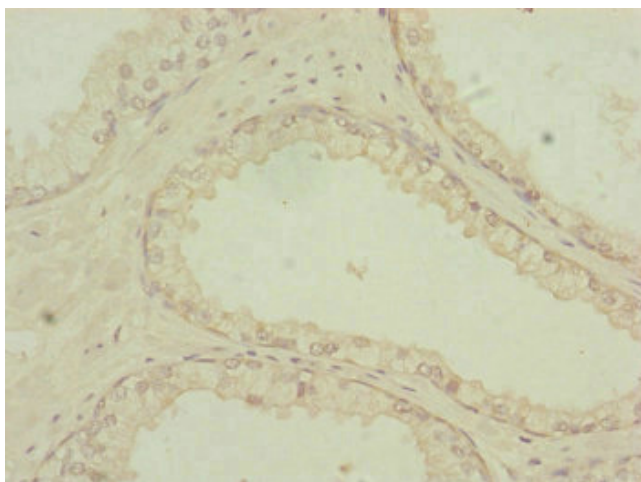
Product Type:	Primary Antibodies
Applications:	IHC, WB
Recommended Dilution:	Recommended dilution: WB:1:1000-1:5000, IHC:1:20-1:200
Reactivity:	Mouse, Human
Host:	Rabbit
Isotype:	IgG
Clonality:	Polyclonal
Immunogen:	Recombinant Human Pyruvate dehydrogenase E1 component subunit alpha, testis-specific form, mitochondrial protein (119-388AA)
Formulation:	PBS with 0.02% sodium azide, 50% glycerol, pH7.3.
Concentration:	lot specific
Purification:	Antigen Affinity Purified
Conjugation:	Unconjugated
Storage:	Upon receipt, store at -20°C or -80°C. Avoid repeated freeze.
Stability:	1 year from dispatch.
Database Link:	P29803
Background:	The pyruvate dehydrogenase complex catalyzes the overall conversion of pyruvate to acetyl-CoA and CO ₂ , and thereby links the glycolytic pathway to the tricarboxylic cycle.



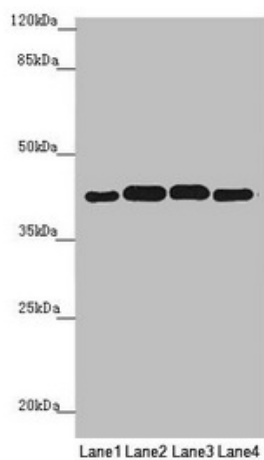
[View online »](#)

Product images:

Immunohistochemistry of paraffin-embedded human testis tissue using TA387227 at dilution of 1:100



Immunohistochemistry of paraffin-embedded human prostate cancer using TA387227 at dilution of 1:100



Western blot

All lanes: PDHA2 antibody at 1.9 μ g/ml

Lane 1: Mouse gonadal tissue

Lane 2: 293T whole cell lysate

Lane 3: A549 whole cell lysate

Lane 4: HepG2 whole cell lysate

Secondary

Goat polyclonal to rabbit IgG at 1/10000 dilution

Predicted band size: 43 kDa

Observed band size: 43 kDa