

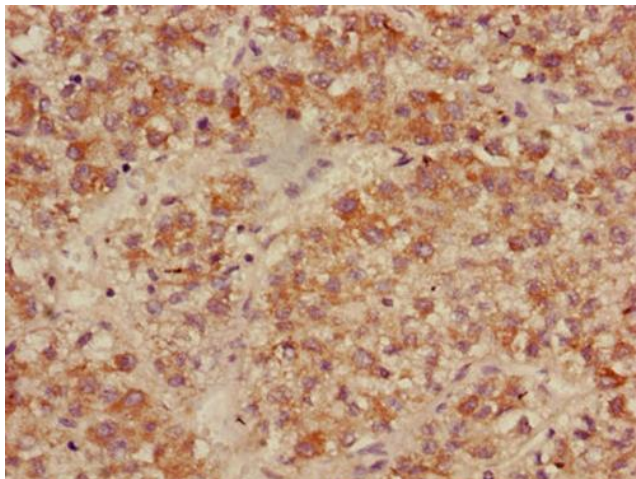
## Product datasheet for **TA387224M**

### ACADL Rabbit Polyclonal Antibody

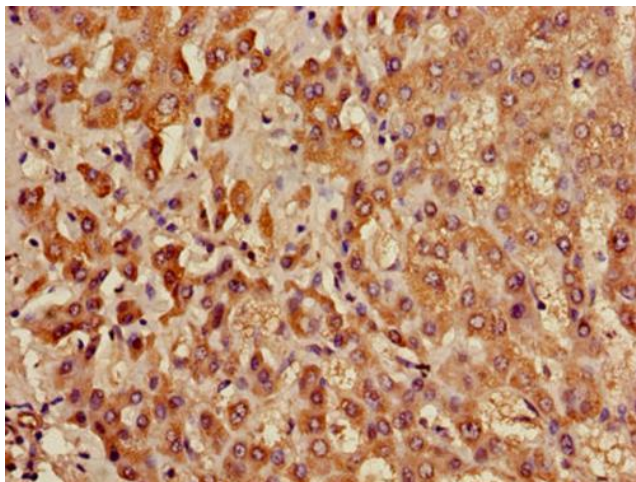
#### Product data:

Product Type:	Primary Antibodies
Applications:	IHC, WB
Recommended Dilution:	Recommended dilution: WB:1:500-2000, IHC:1:20-1:200
Reactivity:	Mouse, Human
Host:	Rabbit
Isotype:	IgG
Clonality:	Polyclonal
Immunogen:	Recombinant Human Long-chain specific acyl-CoA dehydrogenase, mitochondrial protein (30-260AA)
Formulation:	Preservative: 0.03% Proclin 300 Constituents: 50% Glycerol, 0.01M PBS, PH 7.4
Concentration:	lot specific
Purification:	>95%, Protein G purified
Conjugation:	Unconjugated
Storage:	Upon receipt, store at -20°C or -80°C. Avoid repeated freeze.
Stability:	1 year from dispatch.
Database Link:	<a href="#">P28330</a>
Background:	mitochondrial matrix, acyl-CoA dehydrogenase activity, electron carrier activity, fatty-acyl-CoA binding, flavin adenine dinucleotide binding, long-chain-acyl-CoA dehydrogenase activity, oxidoreductase activity, acting on the CH-CH group of donors, with a flavin as acceptor, palmitoyl-CoA oxidase activity, carnitine catabolic process, carnitine metabolic process, CoA-linked

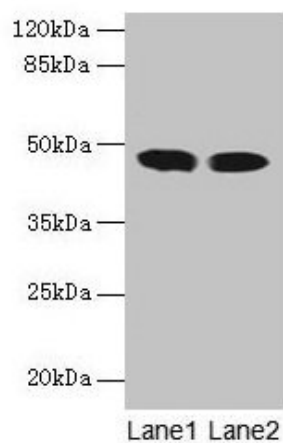
[View online »](#)

**Product images:**

Immunohistochemistry of paraffin-embedded human liver cancer using [TA387224] at dilution of 1:100



Immunohistochemistry of paraffin-embedded human liver tissue using [TA387224] at dilution of 1:100



Western blot

All lanes: ACADL antibody at 8 $\mu$ g/ml

Lane 1: Mouse kidney tissue

Lane 2: Mouse heart tissue

Secondary

Goat polyclonal to rabbit IgG at 1/10000 dilution

Predicted band size: 48 kDa

Observed band size: 48 kDa