

## Product datasheet for **TA387220M**

### **ZBTB25 Rabbit Polyclonal Antibody**

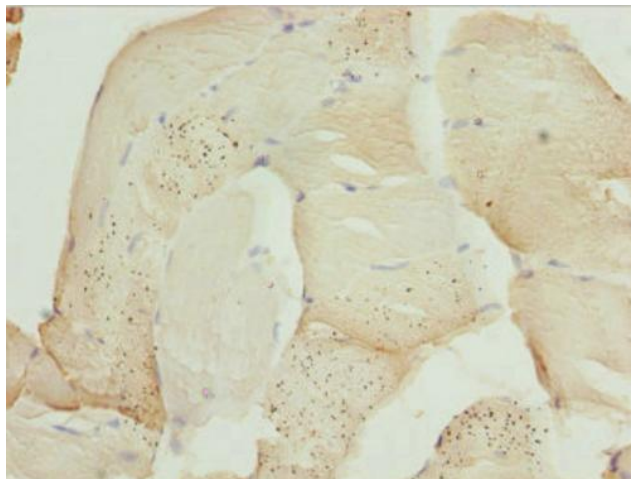
#### **Product data:**

Product Type:	Primary Antibodies
Applications:	IHC, WB
Recommended Dilution:	Recommended dilution: WB:1:1000-1:5000, IHC:1:20-1:200
Reactivity:	Human
Host:	Rabbit
Isotype:	IgG
Clonality:	Polyclonal
Immunogen:	Recombinant Human Zinc finger and BTB domain-containing protein 25 protein (266-435AA)
Formulation:	PBS with 0.02% sodium azide, 50% glycerol, pH7.3.
Concentration:	lot specific
Purification:	Antigen Affinity Purified
Conjugation:	Unconjugated
Storage:	Upon receipt, store at -20°C or -80°C. Avoid repeated freeze.
Stability:	1 year from dispatch.
Database Link:	<a href="#">P24278</a>
Background:	May be involved in transcriptional regulation.

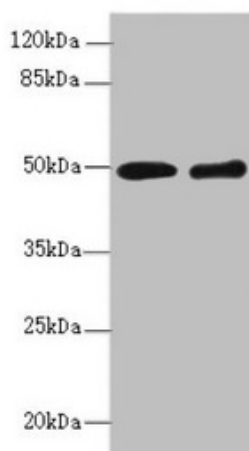


[View online »](#)

## Product images:



Immunohistochemistry of paraffin-embedded human skeletal muscle tissue using [TA387220] at dilution of 1:100



Western blot  
All lanes: ZBTB25 antibody at 1.41 µg/ml  
Lane 1: MCF-7 whole cell lysate  
Lane 2: Hela whole cell lysate  
Secondary  
Goat polyclonal to rabbit IgG at 1/10000 dilution  
Predicted band size: 49 kDa  
Observed band size: 49 kDa