

## Product datasheet for **TA387214M**

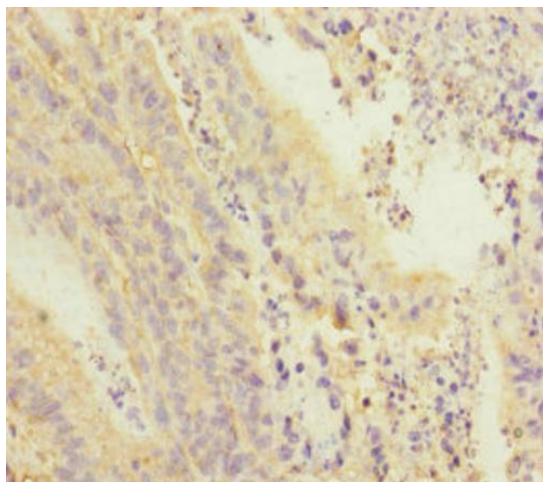
### PDE6A Rabbit Polyclonal Antibody

#### Product data:

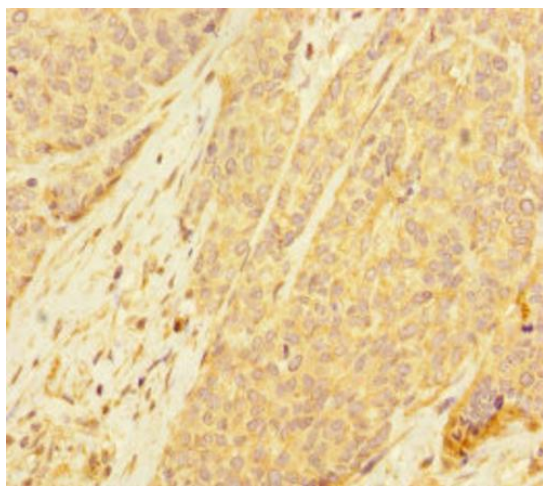
Product Type:	Primary Antibodies
Applications:	IHC, WB
Recommended Dilution:	Recommended dilution: WB:1:1000-1:5000, IHC:1:20-1:200
Reactivity:	Mouse, Human
Host:	Rabbit
Isotype:	IgG
Clonality:	Polyclonal
Immunogen:	Recombinant Human Rod cGMP-specific 3',5'-cyclic phosphodiesterase subunit alpha protein (656-860AA)
Formulation:	PBS with 0.02% sodium azide, 50% glycerol, pH7.3.
Concentration:	lot specific
Purification:	Antigen Affinity Purified
Conjugation:	Unconjugated
Storage:	Upon receipt, store at -20°C or -80°C. Avoid repeated freeze.
Stability:	1 year from dispatch.
Database Link:	<a href="#">P16499</a>
Background:	This protein participates in processes of transmission and amplification of the visual signal.

[View online »](#)

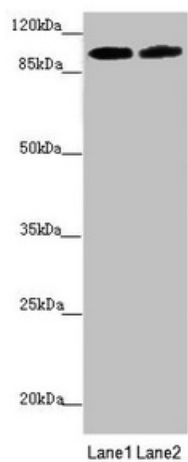
## Product images:



Immunohistochemistry of paraffin-embedded human colon cancer using [TA387214] at dilution of 1:100



Immunohistochemistry of paraffin-embedded human ovarian cancer using [TA387214] at dilution of 1:100



Western blot

All lanes: PDE6A antibody at 3.33 $\mu$ g/ml

Lane 1: Mouse eye tissue

Lane 2: A549 whole cell lysate

Secondary

Goat polyclonal to rabbit IgG at 1/10000 dilution

Predicted band size: 100 kDa

Observed band size: 100 kDa