

Product datasheet for **TA387212M**

P4HA1 Rabbit Polyclonal Antibody

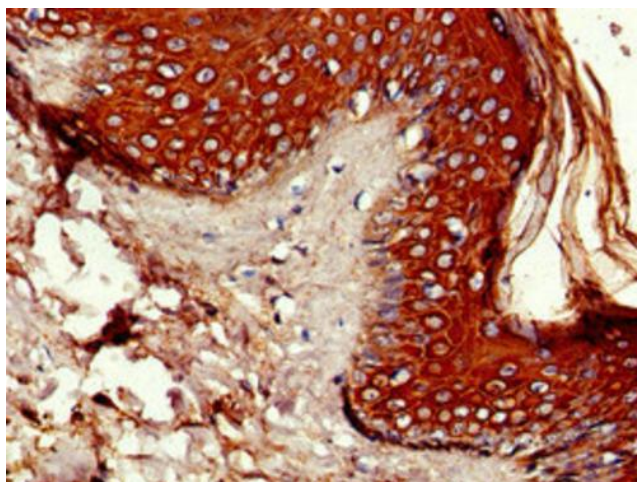
Product data:

Product Type:	Primary Antibodies
Applications:	IHC, WB
Recommended Dilution:	Recommended dilution: WB:1:500-1:5000, IHC:1:20-1:200
Reactivity:	Rat, Human
Host:	Rabbit
Isotype:	IgG
Clonality:	Polyclonal
Immunogen:	Recombinant Human Prolyl 4-hydroxylase subunit alpha-1 protein (256-525AA)
Formulation:	Preservative: 0.03% Proclin 300 Constituents: 50% Glycerol, 0.01M PBS, pH 7.4
Concentration:	lot specific
Purification:	>95%, Protein G purified
Conjugation:	Unconjugated
Storage:	Upon receipt, store at -20°C or -80°C. Avoid repeated freeze.
Stability:	1 year from dispatch.
Database Link:	P13674
Background:	Catalyzes the post-translational formation of 4-hydroxyproline in -Xaa-Pro-Gly- sequences in collagens and other proteins.

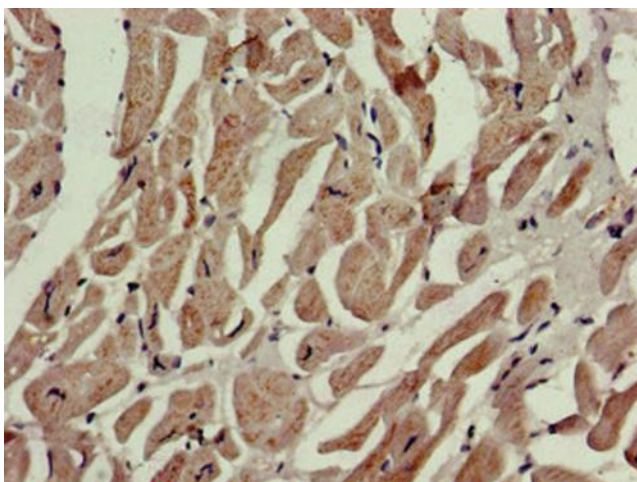


[View online »](#)

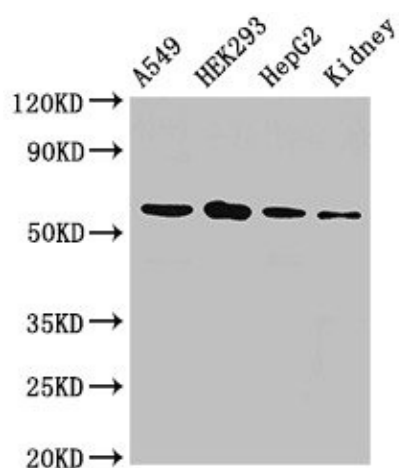
Product images:



Immunohistochemistry of paraffin-embedded human skin tissue using [TA387212] at dilution of 1:100



Immunohistochemistry of paraffin-embedded human heart tissue using [TA387212] at dilution of 1:100



Western Blot

Positive WB detected in: A549 whole cell lysate, HEK293 whole cell lysate, HepG2 whole cell lysate, Rat kidney tissue

All lanes: P4HA1 antibody at 2.5µg/ml

Secondary

Goat polyclonal to rabbit IgG at 1/50000 dilution

Predicted band size: 62, 61, 59 kDa

Observed band size: 62 kDa