

## Product datasheet for **TA387210**

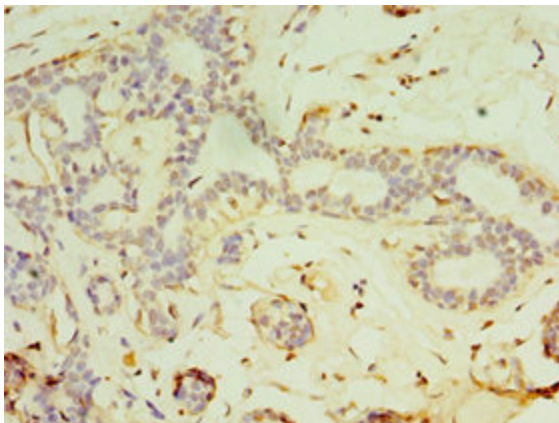
### FGF6 Rabbit Polyclonal Antibody

#### Product data:

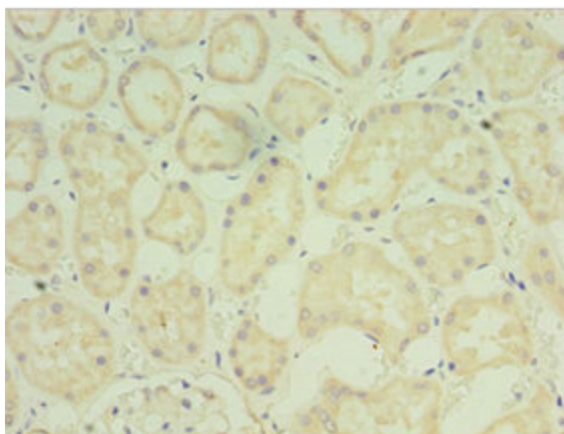
Product Type:	Primary Antibodies
Applications:	IHC, WB
Recommended Dilution:	Recommended dilution: WB:1:500-1:2000, IHC:1:20-1:200
Reactivity:	Human
Host:	Rabbit
Isotype:	IgG
Clonality:	Polyclonal
Immunogen:	Recombinant Human Fibroblast growth factor 6 protein (38-208AA)
Formulation:	PBS with 0.02% sodium azide, 50% glycerol, pH7.3.
Concentration:	lot specific
Purification:	Antigen Affinity Purified
Conjugation:	Unconjugated
Storage:	Upon receipt, store at -20°C or -80°C. Avoid repeated freeze.
Stability:	1 year from dispatch.
Database Link:	<a href="#">P10767</a>
Background:	Plays an important role in the regulation of cell proliferation, cell differentiation, angiogenesis and myogenesis, and is required for normal muscle regeneration.



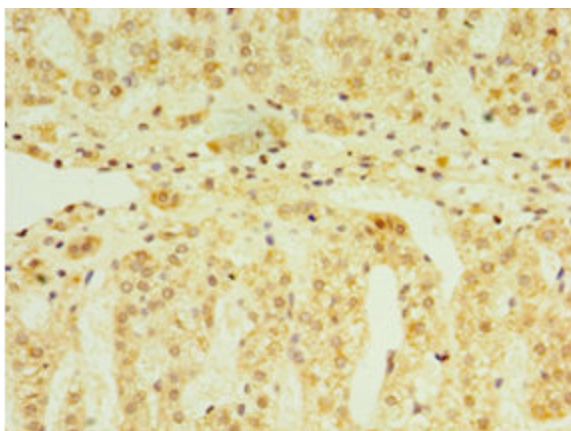
[View online »](#)

**Product images:**

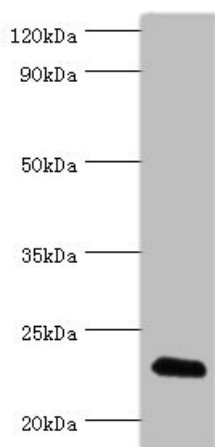
Immunohistochemistry of paraffin-embedded human breast cancer using TA387210 at dilution of 1:100



Immunohistochemistry of paraffin-embedded human kidney tissue using TA387210 at dilution of 1:100



Immunohistochemistry of paraffin-embedded human adrenal gland tissue using TA387210 at dilution of 1:100



Western blot  
All lanes: FGF6 antibody at 10µg/ml + HepG2 whole cell lysate  
Secondary  
Goat polyclonal to rabbit IgG at 1/10000 dilution  
Predicted band size: 23 kDa  
Observed band size: 23 kDa