

Product datasheet for **TA387209M**

ZBTB48 Rabbit Polyclonal Antibody

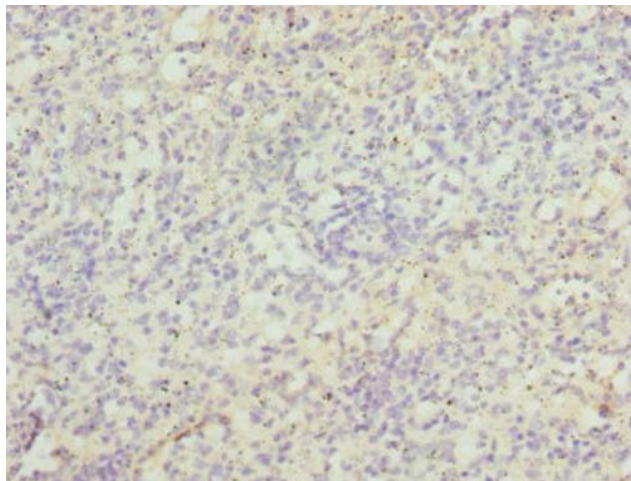
Product data:

Product Type:	Primary Antibodies
Applications:	IHC, WB
Recommended Dilution:	Recommended dilution: WB:1:1000-1:5000, IHC:1:20-1:200
Reactivity:	Mouse, Human
Host:	Rabbit
Isotype:	IgG
Clonality:	Polyclonal
Immunogen:	Recombinant Human Telomere zinc finger-associated protein (1-280AA)
Formulation:	PBS with 0.02% sodium azide, 50% glycerol, pH7.3.
Concentration:	lot specific
Purification:	Antigen Affinity Purified
Conjugation:	Unconjugated
Storage:	Upon receipt, store at -20°C or -80°C. Avoid repeated freeze.
Stability:	1 year from dispatch.
Database Link:	P10074
Background:	Binds to and regulates the J and/or S elements in MHC II promoter.

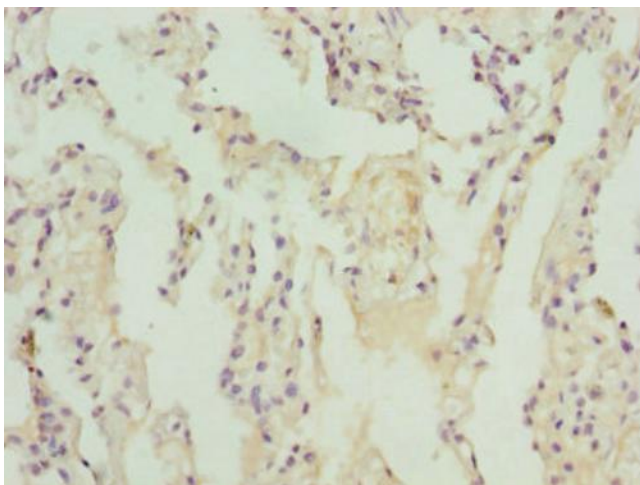


[View online »](#)

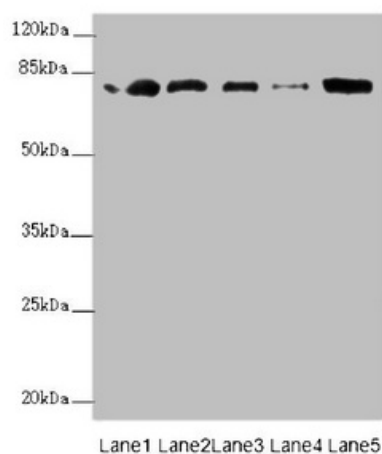
Product images:



Immunohistochemistry of paraffin-embedded human spleen tissue using [TA387209] at dilution of 1:100



Immunohistochemistry of paraffin-embedded human lung tissue using [TA387209] at dilution of 1:100



Western blot

All lanes: ZBTB48 antibody at 0.31 μ g/ml

Lane 1: 293T whole cell lysate

Lane 2: K562 whole cell lysate

Lane 3: HepG2 whole cell lysate

Lane 4: U251 whole cell lysate

Lane 5: Mouse liver tissue

Secondary

Goat polyclonal to rabbit IgG at 1/10000 dilution

Predicted band size: 77 kDa

Observed band size: 77 kDa