

Product datasheet for **TA387206**

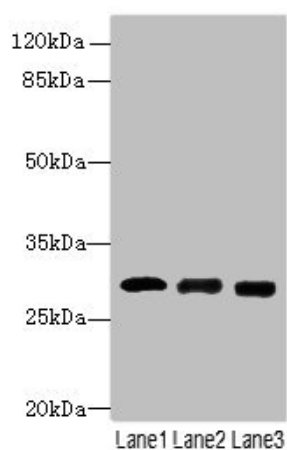
CELA3A Rabbit Polyclonal Antibody

Product data:

Product Type:	Primary Antibodies
Applications:	WB
Recommended Dilution:	Recommended dilution: WB:1:1000-1:5000
Reactivity:	Mouse, Human
Host:	Rabbit
Isotype:	IgG
Clonality:	Polyclonal
Immunogen:	Recombinant Human Chymotrypsin-like elastase family member 3A protein (29-270AA)
Formulation:	Preservative: 0.03% Proclin 300 Constituents: 50% Glycerol, 0.01M PBS, PH 7.4
Concentration:	lot specific
Purification:	>95%, Protein G purified
Conjugation:	Unconjugated
Storage:	Upon receipt, store at -20°C or -80°C. Avoid repeated freeze.
Stability:	1 year from dispatch.
Database Link:	P09093
Background:	Efficient protease with alanine specificity but only little elastolytic activity.



[View online »](#)

Product images:**Western blot**

All lanes: CELA3A antibody at 14 μ g/ml

Lane 1: Mouse heart tissue

Lane 2: Mouse skeletal muscle tissue

Lane 3: Jurkat whole cell lysate

Secondary

Goat polyclonal to rabbit IgG at 1/10000 dilution

Predicted band size: 30 kDa

Observed band size: 30 kDa