

Product datasheet for **TA387205M**

CRYBA1 Rabbit Polyclonal Antibody

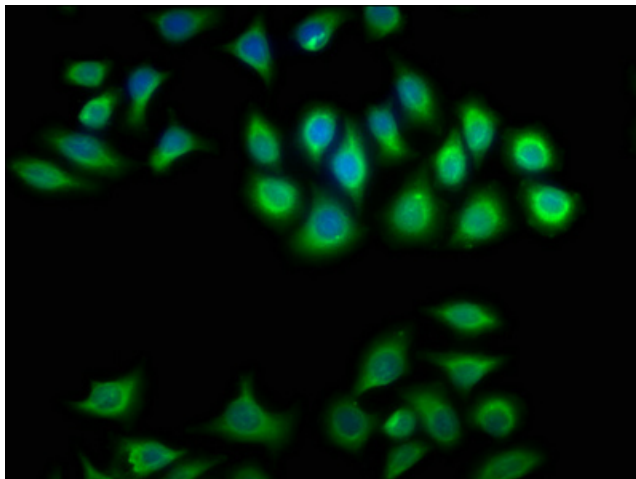
Product data:

Product Type:	Primary Antibodies
Applications:	IF, IHC, WB
Recommended Dilution:	Recommended dilution: WB:1:1000-1:5000, IHC:1:20-1:200, IF:1:50-1:200
Reactivity:	Mouse, Human
Host:	Rabbit
Isotype:	IgG
Clonality:	Polyclonal
Immunogen:	Recombinant Human Beta-crystallin A3 protein (1-215AA)
Formulation:	Preservative: 0.03% Proclin 300 Constituents: 50% Glycerol, 0.01M PBS, PH 7.4
Concentration:	lot specific
Purification:	>95%, Protein G purified
Conjugation:	Unconjugated
Storage:	Upon receipt, store at -20°C or -80°C. Avoid repeated freeze.
Stability:	1 year from dispatch.
Database Link:	P05813
Background:	Crystallins are the dominant structural components of the vertebrate eye lens.

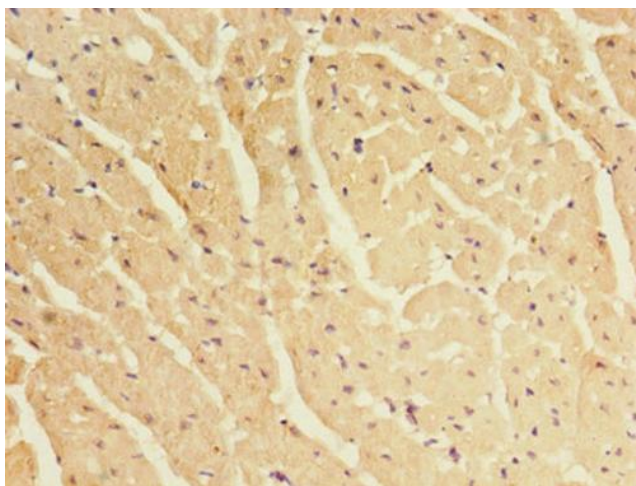


[View online »](#)

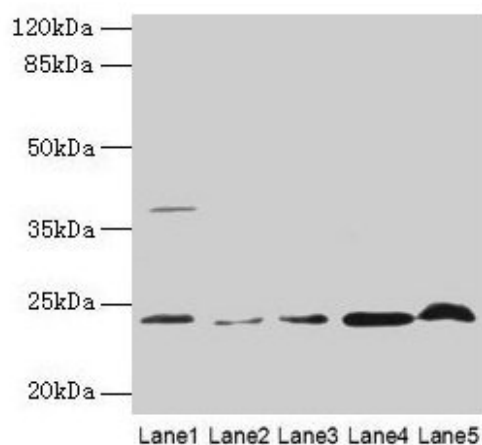
Product images:



Immunofluorescence staining of A549 cells with [TA387205] at 1:100, counter-stained with DAPI. The cells were fixed in 4% formaldehyde, permeabilized using 0.2% Triton X-100 and blocked in 10% normal Goat Serum. The cells were then incubated with the antibody overnight at 4°C. The secondary antibody was Alexa Fluor 488-conjugated AffiniPure Goat Anti-Rabbit IgG(H+L).



Immunohistochemistry of paraffin-embedded human heart tissue using [TA387205] at dilution of 1:100



Western blot

All lanes: CRYBA1 antibody at 6 μ g/ml

Lane 1: Human placenta tissue

Lane 2: U251 whole cell lysate

Lane 3: U937 whole cell lysate

Lane 4: Mouse stomach tissue

Lane 5: Mouse liver tissue

Secondary

Goat polyclonal to rabbit IgG at 1/10000 dilution

Predicted band size: 26, 24 kDa

Observed band size: 24 kDa