

## Product datasheet for **TA387201**

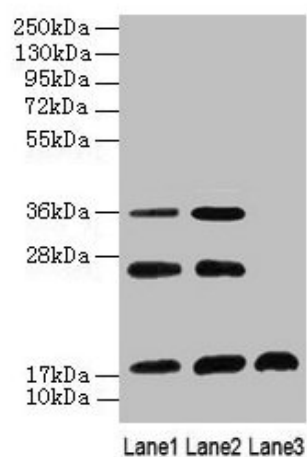
### SFT2D2 Rabbit Polyclonal Antibody

#### Product data:

Product Type:	Primary Antibodies
Applications:	IF, WB
Recommended Dilution:	Recommended dilution: WB:1:1000-1:5000, IF:1:50-1:200
Reactivity:	Mouse, Human
Host:	Rabbit
Isotype:	IgG
Clonality:	Polyclonal
Immunogen:	Recombinant Human Vesicle transport protein SFT2B protein (1-36AA)
Formulation:	Preservative: 0.03% Proclin 300 Constituents: 50% Glycerol, 0.01M PBS, PH 7.4
Concentration:	lot specific
Purification:	>95%, Protein G purified
Conjugation:	Unconjugated
Storage:	Upon receipt, store at -20°C or -80°C. Avoid repeated freeze.
Stability:	1 year from dispatch.
Database Link:	<a href="#">O95562</a>
Background:	May be involved in fusion of retrograde transport vesicles derived from an endocytic compartment with the Golgi complex.



[View online »](#)

**Product images:****Western Blot**

All lanes: SFT2D2 antibody at 8 $\mu$ g/ml

Lane 1: Mouse liver tissue

Lane 2: Mouse kidney tissue

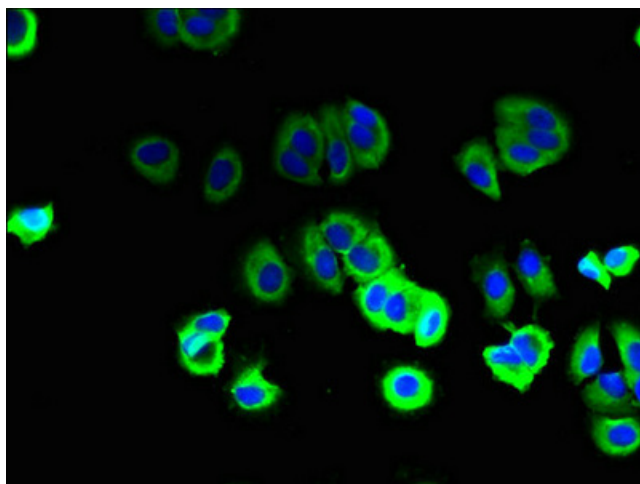
Lane 3: Mouse thymus tissue

Secondary

Goat polyclonal to rabbit IgG at 1/10000 dilution

Predicted band size: 18 kDa

Observed band size: 18, 26, 36 kDa



Immunofluorescent analysis of MCF-7 cells using TA387201 at dilution of 1:100 and Alexa Fluor 488-conjugated AffiniPure Goat Anti-Rabbit IgG(H+L)