

Product datasheet for **TA387197M**

NDUFB6 Rabbit Polyclonal Antibody

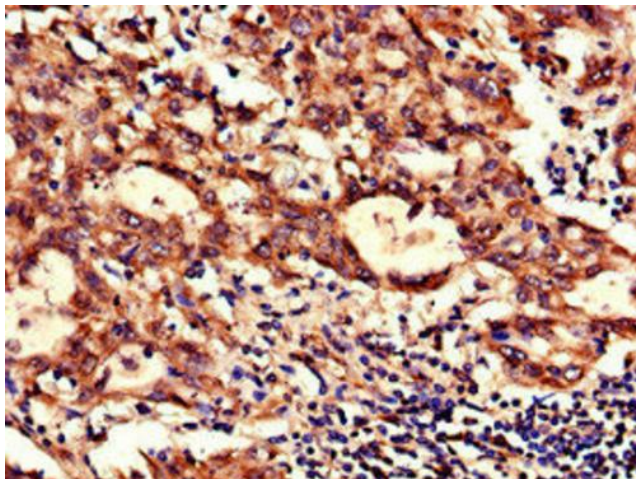
Product data:

Product Type:	Primary Antibodies
Applications:	IHC, IP, WB
Recommended Dilution:	Recommended dilution: WB:1:500-1:5000, IHC:1:20-1:200, IP:1:200-1:2000
Reactivity:	Mouse, Human
Host:	Rabbit
Isotype:	IgG
Clonality:	Polyclonal
Immunogen:	Recombinant Human NADH dehydrogenase [ubiquinone] 1 beta subcomplex subunit 6 protein (2-67AA)
Formulation:	Preservative: 0.03% Proclin 300 Constituents: 50% Glycerol, 0.01M PBS, PH 7.4
Concentration:	lot specific
Purification:	>95%, Protein G purified
Conjugation:	Unconjugated
Storage:	Upon receipt, store at -20°C or -80°C. Avoid repeated freeze.
Stability:	1 year from dispatch.
Database Link:	O95139
Background:	Accessory subunit of the mitochondrial membrane respiratory chain NADH dehydrogenase (Complex I), that is believed not to be involved in catalysis. Complex I functions in the transfer of electrons from NADH to the respiratory chain. The immediate electron acceptor for the enzyme is believed to be ubiquinone.

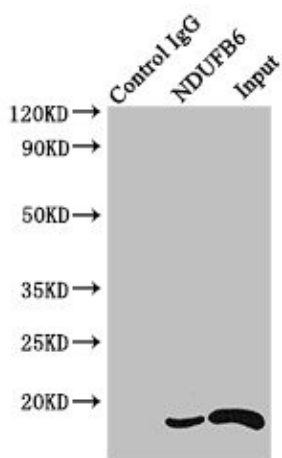


[View online »](#)

Product images:



Immunohistochemistry of paraffin-embedded human lung cancer using [TA387197] at dilution of 1:100

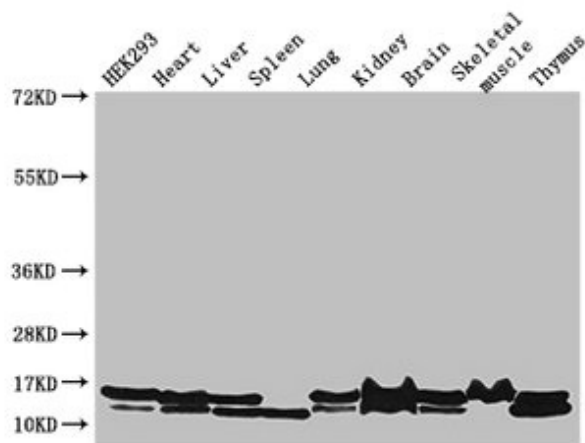


Immunoprecipitating NDUFB6 in HEK293 whole cell lysate

Lane 1: Rabbit control IgG instead of (1 μ g) instead of [TA387197] in HEK293 whole cell lysate. For western blotting, a HRP-conjugated Protein G antibody was used as the secondary antibody (1/2000)

Lane 2: [TA387197] (4 μ g) + HEK293 whole cell lysate (500 μ g)

Lane 3: HEK293 whole cell lysate (20 μ g)



Western Blot

Positive WB detected in: HEK293 whole cell lysate, Mouse heart tissue, Mouse liver tissue, Mouse spleen tissue, Mouse lung tissue, Mouse kidney tissue, Mouse brain tissue, Mouse skeletal muscle tissue, Mouse thymus tissue

All lanes: NDUFB6 antibody at 3µg/ml

Secondary

Goat polyclonal to rabbit IgG at 1/50000 dilution

Predicted band size: 16, 14 kDa

Observed band size: 16, 14 kDa