

Product datasheet for **TA387196M**

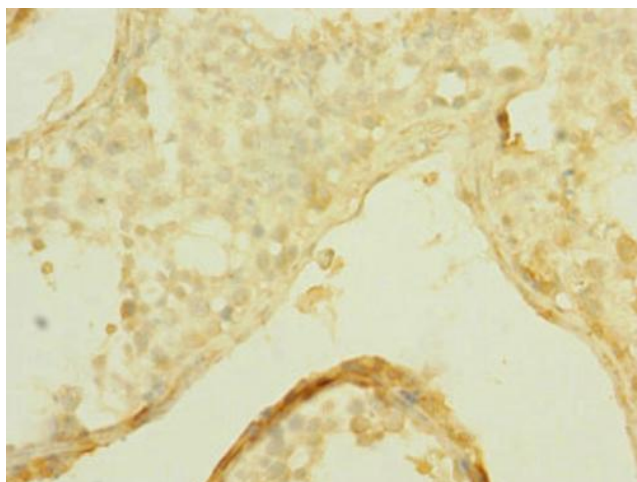
SLCO2B1 Rabbit Polyclonal Antibody

Product data:

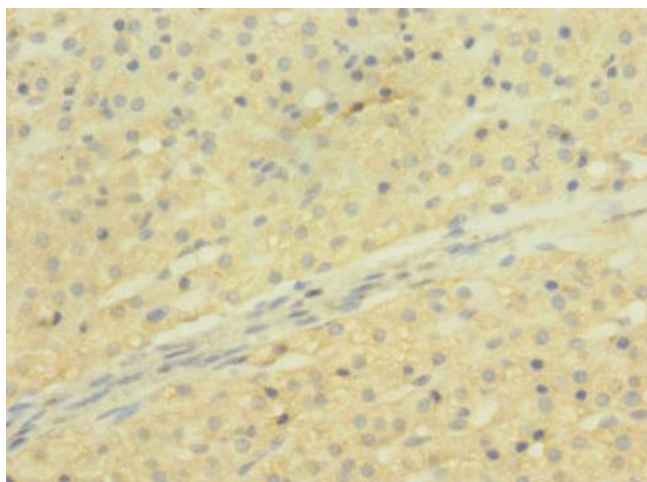
Product Type:	Primary Antibodies
Applications:	IHC, WB
Recommended Dilution:	Recommended dilution: WB:1:1000-1:5000, IHC:1:20-1:200
Reactivity:	Human
Host:	Rabbit
Isotype:	IgG
Clonality:	Polyclonal
Immunogen:	Recombinant Human Solute carrier organic anion transporter family member 2B1 protein (130-210AA)
Formulation:	PBS with 0.02% sodium azide, 50% glycerol, pH7.3.
Concentration:	lot specific
Purification:	Antigen Affinity Purified
Conjugation:	Unconjugated
Storage:	Upon receipt, store at -20°C or -80°C. Avoid repeated freeze.
Stability:	1 year from dispatch.
Database Link:	O94956
Background:	Mediates the Na(+)-independent transport of organic anions such as taurocholate, the prostaglandins PGD2, PGE1, PGE2, leukotriene C4, thromboxane B2 and iloprost.

[View online »](#)

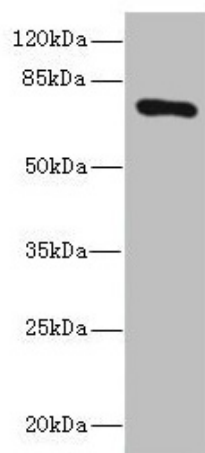
Product images:



Immunohistochemistry of paraffin-embedded human testis tissue using [TA387196] at dilution of 1:100



Immunohistochemistry of paraffin-embedded human adrenal gland tissue using [TA387196] at dilution of 1:100



Western blot

All lanes: SLCO2B1 antibody at 1.5µg/ml + HepG2 whole cell lysate

Secondary

Goat polyclonal to rabbit IgG at 1/10000 dilution

Predicted band size: 77, 53, 75, 62 kDa

Observed band size: 77 kDa