

## Product datasheet for **TA387193M**

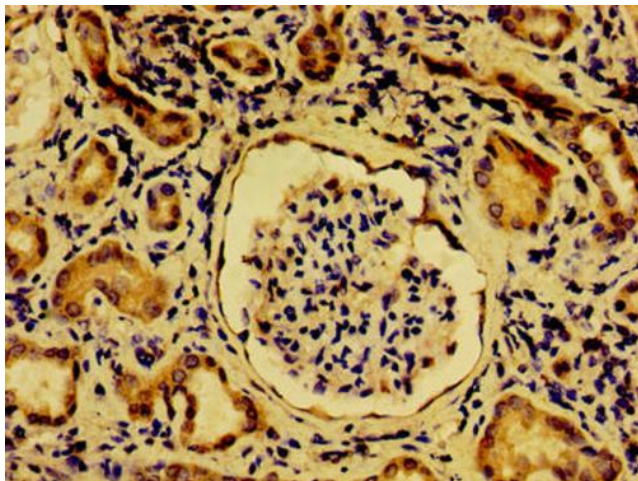
### NME6 Rabbit Polyclonal Antibody

#### Product data:

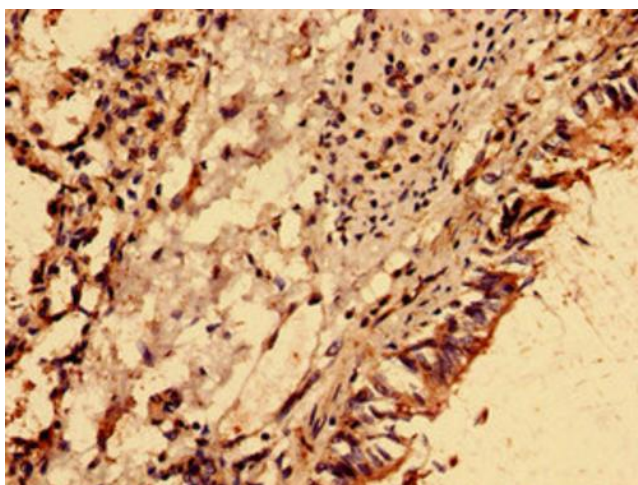
Product Type:	Primary Antibodies
Applications:	IHC, WB
Recommended Dilution:	Recommended dilution: WB:1:500-1:5000, IHC:1:20-1:200
Reactivity:	Human
Host:	Rabbit
Isotype:	IgG
Clonality:	Polyclonal
Immunogen:	Recombinant Human Nucleoside diphosphate kinase 6 protein (1-186AA)
Formulation:	Preservative: 0.03% Proclin 300 Constituents: 50% Glycerol, 0.01M PBS, PH 7.4
Concentration:	lot specific
Purification:	>95%, Protein G purified
Conjugation:	Unconjugated
Storage:	Upon receipt, store at -20°C or -80°C. Avoid repeated freeze.
Stability:	1 year from dispatch.
Database Link:	<a href="#">Q75414</a>
Background:	Major role in the synthesis of nucleoside triphosphates other than ATP. The ATP gamma phosphate is transferred to the NDP beta phosphate via a ping-pong mechanism, using a phosphorylated active-site intermediate. Inhibitor of p53-induced apoptosis.

[View online »](#)

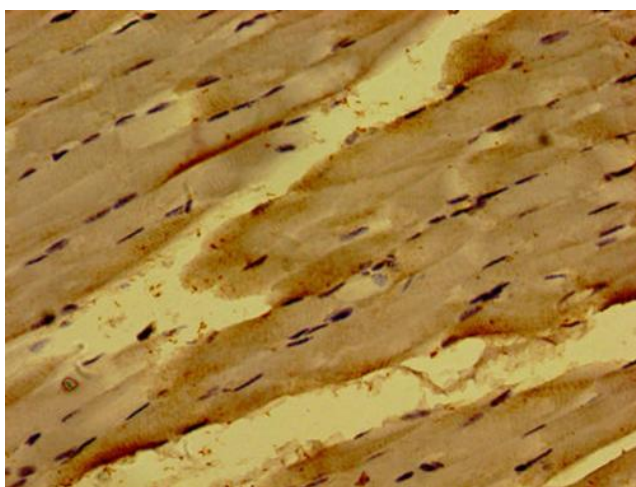
## Product images:



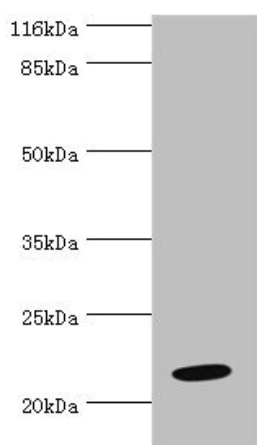
Immunohistochemistry of paraffin-embedded human kidney tissue using [TA387193] at dilution of 1:100



Immunohistochemistry analysis of human lung cancer using [TA387193] at dilution of 1:100



Immunohistochemistry of paraffin-embedded human skeletal muscle tissue using [TA387193] at dilution of 1:100



Western blot  
All lanes: NME6 antibody at 2 $\mu$ g/ml + HeLa whole cell lysate  
Secondary  
Goat polyclonal to rabbit IgG at 1/10000 dilution  
Predicted band size: 22, 14, 19 kDa  
Observed band size: 22 kDa