

Product datasheet for **TA387193**

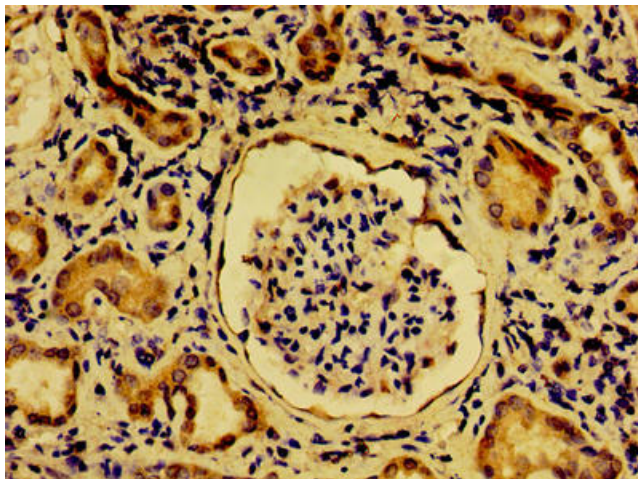
NME6 Rabbit Polyclonal Antibody

Product data:

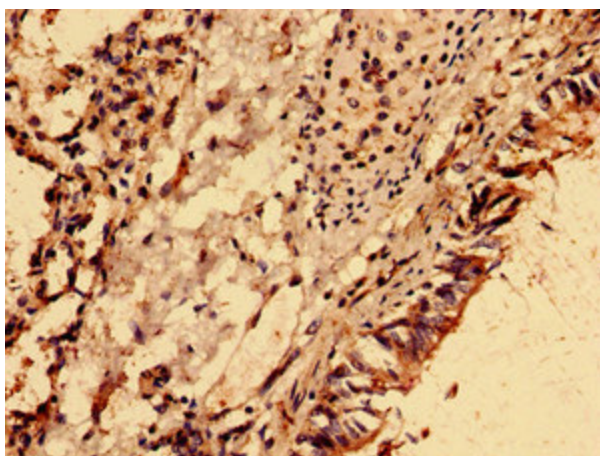
| | |
|-----------------------|--|
| Product Type: | Primary Antibodies |
| Applications: | IHC, WB |
| Recommended Dilution: | Recommended dilution: WB:1:500-1:5000, IHC:1:20-1:200 |
| Reactivity: | Human |
| Host: | Rabbit |
| Isotype: | IgG |
| Clonality: | Polyclonal |
| Immunogen: | Recombinant Human Nucleoside diphosphate kinase 6 protein (1-186AA) |
| Formulation: | Preservative: 0.03% Proclin 300 Constituents: 50% Glycerol, 0.01M PBS, PH 7.4 |
| Concentration: | lot specific |
| Purification: | >95%, Protein G purified |
| Conjugation: | Unconjugated |
| Storage: | Upon receipt, store at -20°C or -80°C. Avoid repeated freeze. |
| Stability: | 1 year from dispatch. |
| Database Link: | O75414 |
| Background: | Major role in the synthesis of nucleoside triphosphates other than ATP. The ATP gamma phosphate is transferred to the NDP beta phosphate via a ping-pong mechanism, using a phosphorylated active-site intermediate. Inhibitor of p53-induced apoptosis. |



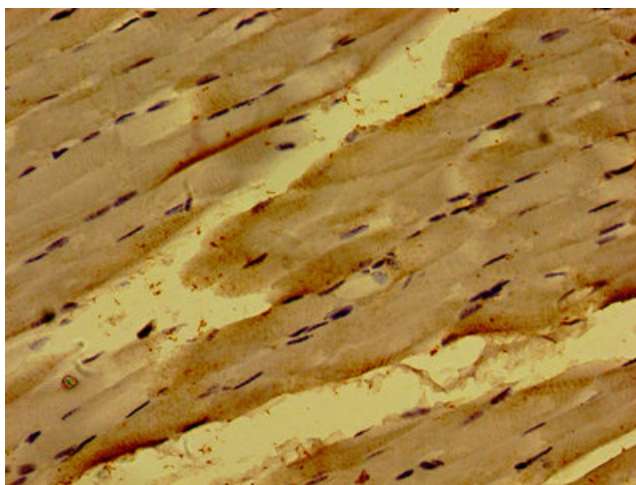
[View online »](#)

Product images:

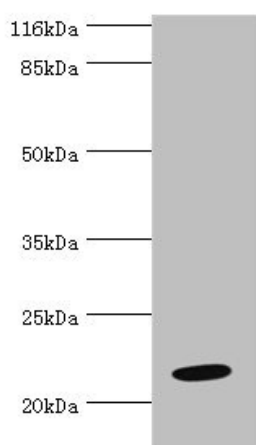
Immunohistochemistry of paraffin-embedded human kidney tissue using TA387193 at dilution of 1:100



Immunohistochemistry analysis of human lung cancer using TA387193 at dilution of 1:100



Immunohistochemistry of paraffin-embedded human skeletal muscle tissue using TA387193 at dilution of 1:100



Western blot
All lanes: NME6 antibody at 2 μ g/ml + HeLa whole cell lysate
Secondary
Goat polyclonal to rabbit IgG at 1/10000 dilution
Predicted band size: 22, 14, 19 kDa
Observed band size: 22 kDa