

## Product datasheet for **TA387186**

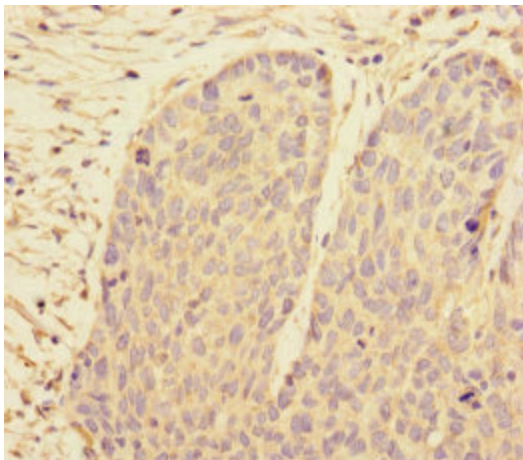
### PRPF4 Rabbit Polyclonal Antibody

#### Product data:

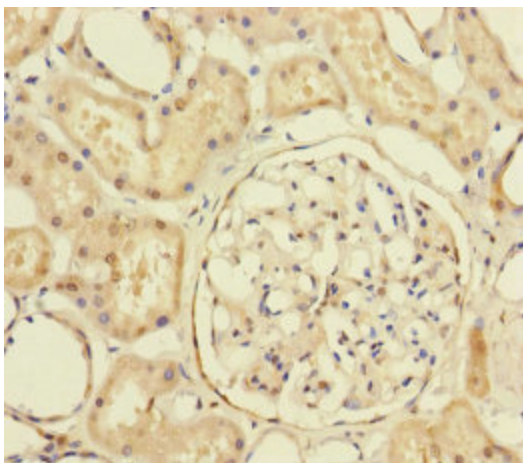
Product Type:	Primary Antibodies
Applications:	IHC, WB
Recommended Dilution:	Recommended dilution: WB:1:1000-1:5000, IHC:1:20-1:200
Reactivity:	Human
Host:	Rabbit
Isotype:	IgG
Clonality:	Polyclonal
Immunogen:	Recombinant Human U4/U6 small nuclear ribonucleoprotein Prp4 protein (1-260AA)
Formulation:	PBS with 0.02% sodium azide, 50% glycerol, pH7.3.
Concentration:	lot specific
Purification:	Antigen Affinity Purified
Conjugation:	Unconjugated
Storage:	Upon receipt, store at -20°C or -80°C. Avoid repeated freeze.
Stability:	1 year from dispatch.
Database Link:	<a href="#">O43172</a>
Background:	Participates in pre-mRNA splicing. Part of the U4/U5/U6 tri-snRNP complex, one of the building blocks of the spliceosome.



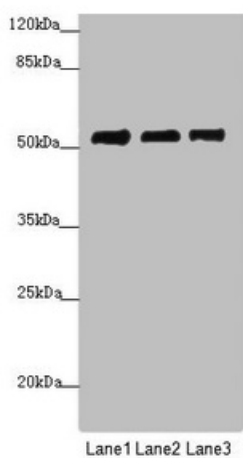
[View online »](#)

**Product images:**

Immunohistochemistry of paraffin-embedded human ovarian cancer using TA387186 at dilution of 1:100



Immunohistochemistry of paraffin-embedded human kidney tissue using TA387186 at dilution of 1:100

**Western blot**

All lanes: PRPF4 antibody at 3.89  $\mu\text{g/ml}$

Lane 1: Jurkat whole cell lysate

Lane 2: HeLa whole cell lysate

Lane 3: HepG2 whole cell lysate

Secondary

Goat polyclonal to rabbit IgG at 1/10000 dilution

Predicted band size: 58 kDa

Observed band size: 58 kDa