

Product datasheet for **TA387185M**

PRPF4 Rabbit Polyclonal Antibody

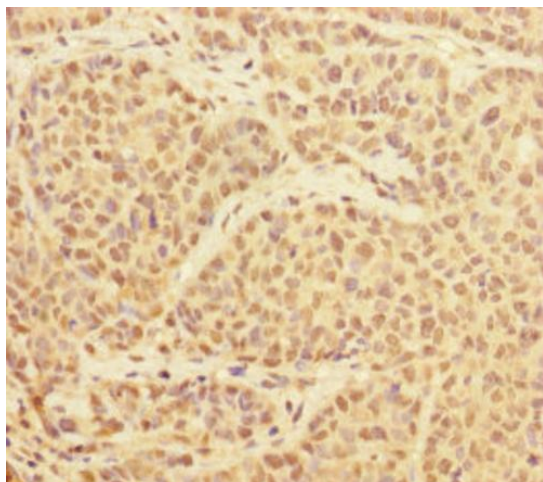
Product data:

Product Type:	Primary Antibodies
Applications:	IHC, WB
Recommended Dilution:	Recommended dilution: WB:1:1000-1:5000, IHC:1:20-1:200
Reactivity:	Human
Host:	Rabbit
Isotype:	IgG
Clonality:	Polyclonal
Immunogen:	Recombinant Human U4/U6 small nuclear ribonucleoprotein Prp4 protein (1-260AA)
Formulation:	PBS with 0.02% sodium azide, 50% glycerol, pH7.3.
Concentration:	lot specific
Purification:	Antigen Affinity Purified
Conjugation:	Unconjugated
Storage:	Upon receipt, store at -20°C or -80°C. Avoid repeated freeze.
Stability:	1 year from dispatch.
Database Link:	O43172
Background:	Participates in pre-mRNA splicing. Part of the U4/U5/U6 tri-snRNP complex, one of the building blocks of the spliceosome.

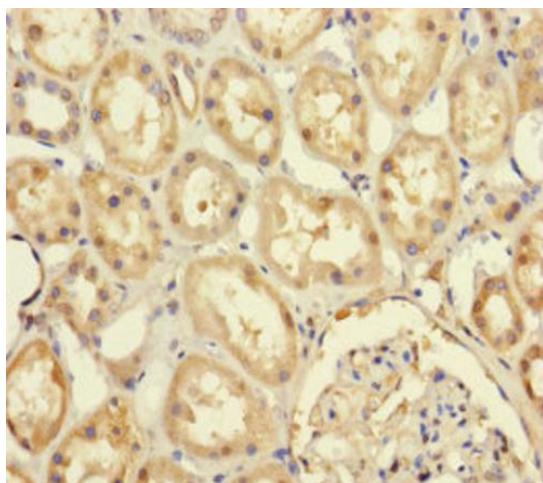


[View online »](#)

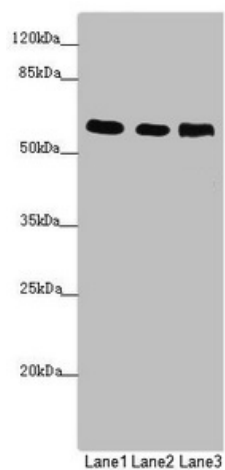
Product images:



Immunohistochemistry of paraffin-embedded human ovarian cancer using [TA387185] at dilution of 1:100



Immunohistochemistry of paraffin-embedded human kidney tissue using [TA387185] at dilution of 1:100



Western blot

All lanes: PRPF4 antibody at 2.87 μ g/ml

Lane 1: Jurkat whole cell lysate

Lane 2: Hela whole cell lysate

Lane 3: HepG2 whole cell lysate

Secondary

Goat polyclonal to rabbit IgG at 1/10000 dilution

Predicted band size: 59 kDa

Observed band size: 59 kDa