

Product datasheet for **TA387183M**

SCAMP1 Rabbit Polyclonal Antibody

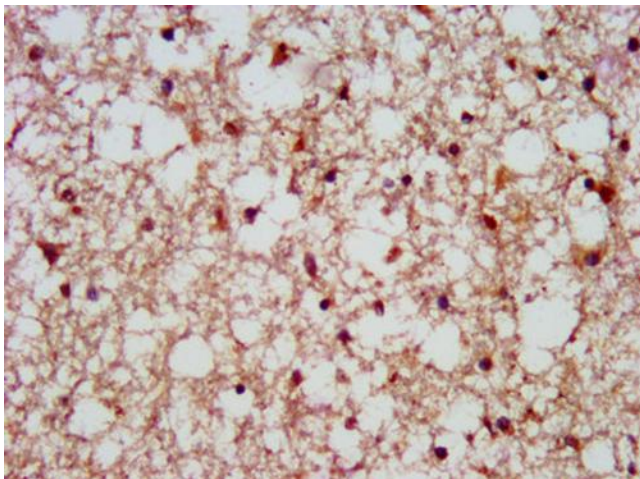
Product data:

Product Type:	Primary Antibodies
Applications:	IHC, WB
Recommended Dilution:	Recommended dilution: WB:1:500-1:5000, IHC:1:200-1:500
Reactivity:	Rat, Human
Host:	Rabbit
Isotype:	IgG
Clonality:	Polyclonal
Immunogen:	Recombinant Human Secretory carrier-associated membrane protein 1 protein (2-134AA)
Formulation:	Preservative: 0.03% Proclin 300 Constituents: 50% Glycerol, 0.01M PBS, pH 7.4
Concentration:	lot specific
Purification:	>95%, Protein G purified
Conjugation:	Unconjugated
Storage:	Upon receipt, store at -20°C or -80°C. Avoid repeated freeze.
Stability:	1 year from dispatch.
Database Link:	Q15126
Background:	Functions in post-Golgi recycling pathways. Acts as a recycling carrier to the cell surface.

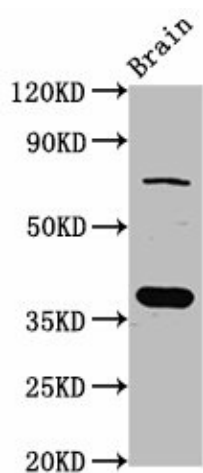


[View online »](#)

Product images:



IHC image of [TA387183] diluted at 1:500 and staining in paraffin-embedded human brain tissue performed on a Leica Bond™ system.



Western Blot
 Positive WB detected in: Rat brain tissue
 All lanes: SCAMP1 antibody at 4µg/ml
 Secondary
 Goat polyclonal to rabbit IgG at 1/50000 dilution
 Predicted band size: 38, 19 kDa
 Observed band size: 38 kDa