

## Product datasheet for **TA387182M**

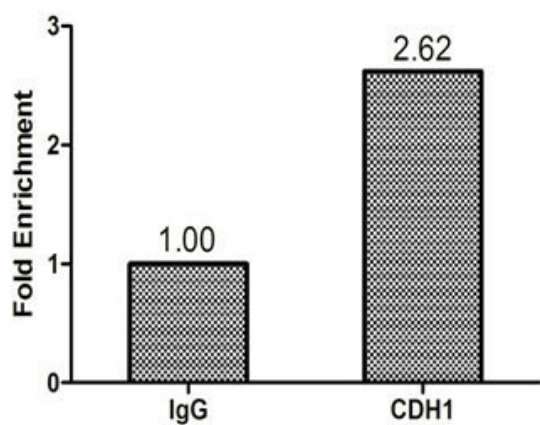
### CHD1 Rabbit Polyclonal Antibody

#### Product data:

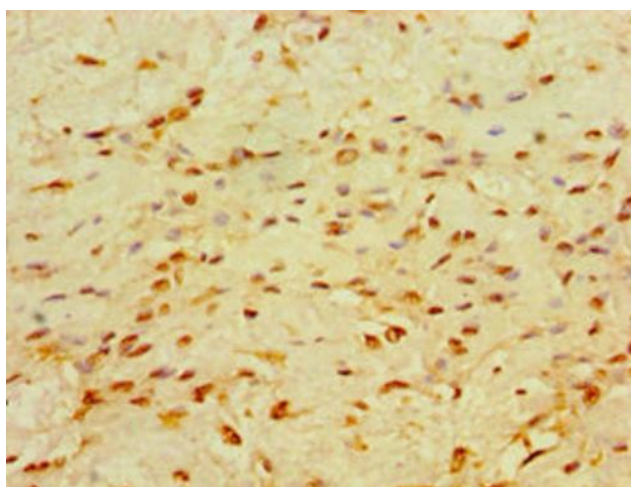
Product Type:	Primary Antibodies
Applications:	ChIP, IHC
Recommended Dilution:	Recommended dilution: IHC:1:20-1:200
Reactivity:	Human
Host:	Rabbit
Isotype:	IgG
Clonality:	Polyclonal
Immunogen:	Recombinant Human Chromodomain-helicase-DNA-binding protein 1 protein (1501-1710AA)
Formulation:	PBS with 0.02% sodium azide, 50% glycerol, pH7.3.
Concentration:	lot specific
Purification:	Antigen Affinity Purified
Conjugation:	Unconjugated
Storage:	Upon receipt, store at -20°C or -80°C. Avoid repeated freeze.
Stability:	1 year from dispatch.
Database Link:	<a href="#">O14646</a>
Background:	ATP-dependent chromatin-remodeling factor which functions as substrate recognition component of the transcription regulatory histone acetylation (HAT) complex SAGA. Regulates polymerase II transcription. Also required for efficient transcription by RNA polymerase I, and more specifically the polymerase I transcription termination step. Regulates negatively DNA replication. Not only involved in transcription-related chromatin-remodeling, but also required to maintain a specific chromatin configuration across the genome. Is also associated with histone deacetylase (HDAC) activity (By similarity). Required for the bridging of SNF2, the FACT complex, the PAF complex as well as the U2 snRNP complex to H3K4me3. Functions to modulate the efficiency of pre-mRNA splicing in part through physical bridging of spliceosomal components to H3K4me3. Required for maintaining open chromatin and pluripotency in embryonic stem cells.


[View online »](#)

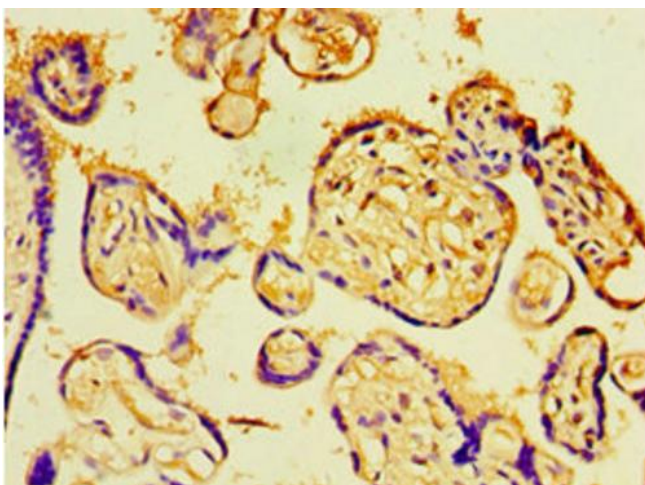
## Product images:



Chromatin Immunoprecipitation Hela ( $1.1 \times 10^6$ ) were cross-linked with formaldehyde, sonicated, and immunoprecipitated with  $4\mu\text{g}$  anti-CDH1 or a control normal rabbit IgG. The resulting ChIP DNA was quantified tissue using real-time PCR with primers (CSB-PP005325HU) against the RPL30 promoter.



Immunohistochemistry of paraffin-embedded human breast cancer using [TA387182] at dilution of 1:100



Immunohistochemistry of paraffin-embedded human placenta tissue using [TA387182] at dilution of 1:100