

## Product datasheet for **TA387180**

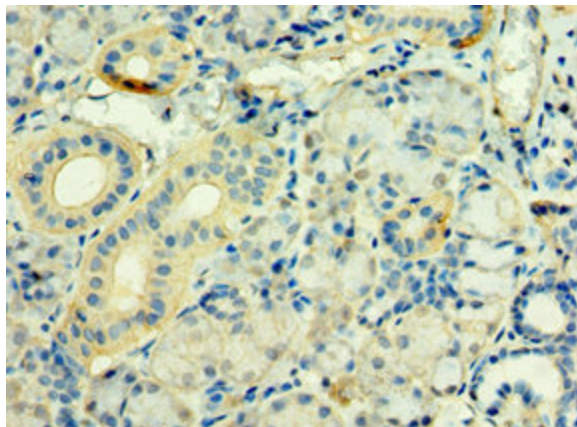
### STXBP3 Rabbit Polyclonal Antibody

#### Product data:

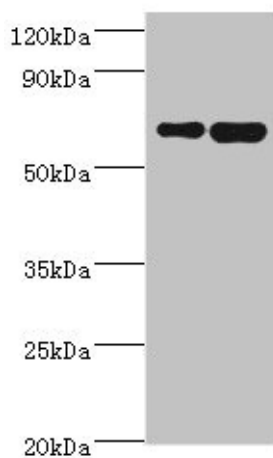
Product Type:	Primary Antibodies
Applications:	IHC, WB
Recommended Dilution:	Recommended dilution: WB:1:500-1:2000, IHC:1:20-1:200
Reactivity:	Human
Host:	Rabbit
Isotype:	IgG
Clonality:	Polyclonal
Immunogen:	Recombinant Human Syntaxin-binding protein 3 protein (343-592AA)
Formulation:	PBS with 0.02% sodium azide, 50% glycerol, pH7.3.
Concentration:	lot specific
Purification:	Antigen Affinity Purified
Conjugation:	Unconjugated
Storage:	Upon receipt, store at -20°C or -80°C. Avoid repeated freeze.
Stability:	1 year from dispatch.
Database Link:	<a href="#">O00186</a>
Background:	Together with STX4 and VAMP2, may play a role in insulin-dependent movement of GLUT4 and in docking/fusion of intracellular GLUT4-containing vesicles with the cell surface in adipocytes.



[View online »](#)

**Product images:**

Immunohistochemistry of paraffin-embedded human pancreatic tissue using TA387180 at dilution of 1:100



Western blot  
All lanes: STXBP3 antibody at 10 $\mu$ g/ml  
Lane 1: HepG2 whole cell lysate  
Lane 2: K562 whole cell lysate  
Secondary  
Goat polyclonal to rabbit IgG at 1/10000 dilution  
Predicted band size: 68 kDa  
Observed band size: 68 kDa